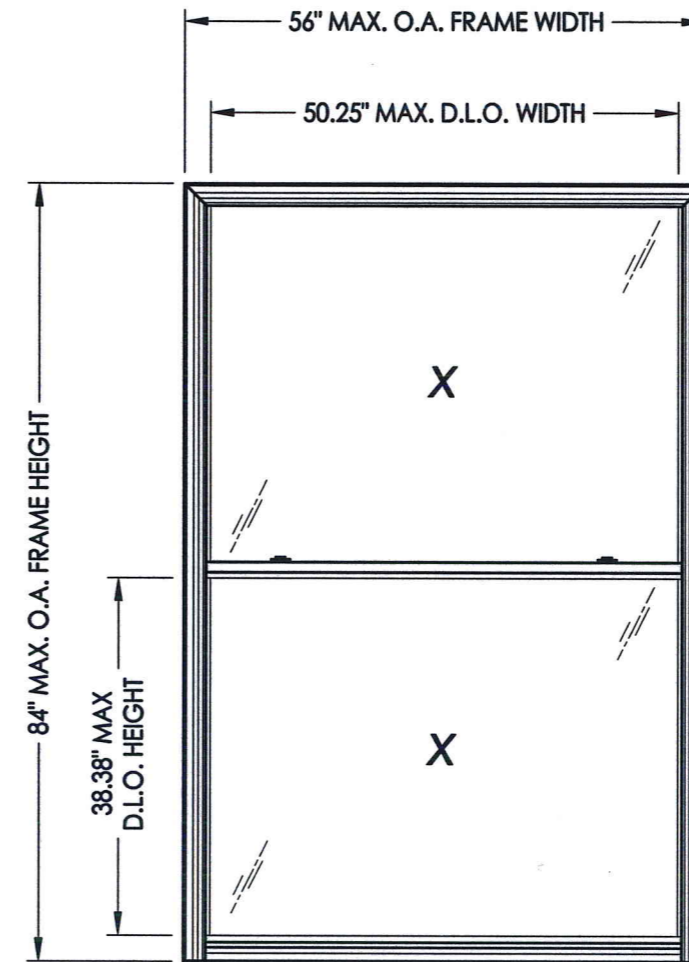


# WINCORE™

## WINDOWS & DOORS

250 Staunton Turnpike, Parkersburg, WV 26104

### 5400 / 5400S Vinyl Double Hung Window "NON-IMPACT"



#### GENERAL NOTES

- This product has been evaluated and is in compliance with the 2010 Florida Building Code (FBC) structural requirements excluding the "High Velocity Hurricane Zone" (HVHZ).
- Product anchors shall be as listed and spaced as shown on details. Anchor embedment to base material shall be beyond wall dressing or stucco.
- When used in areas requiring wind borne debris protection this product is required to be protected with an impact resistant covering that complies with Section 1609.1.2 of the FBC.
- For 2x stud framing construction, anchoring of these units shall be the same as that shown for 2x buck masonry construction.
- Site conditions that deviate from the details of this drawing require further engineering analysis by a licensed engineer or registered architect.

TABLE OF CONTENTS	
SHEET#	DESCRIPTION
1	Typical elevations, design pressures and general notes
2	Horizontal cross sections
3	Vertical cross sections
4	Buck and frame anchoring
5	Bill of materials, components & glazing details

MAX. FRAME DIMENSION	MAX. D.L.O. DIMENSION	GLASS TYPE	DESIGN PRESSURE (PSF)	
			POSITIVE	NEGATIVE
38.0" X 72.0"	32.25" X 32.38"	G1	+55.0	-55.0
56.0" X 48.0"	50.25" X 20.38"	G1	+35.0	-35.0
52.0" X 50.0"	46.25" X 21.38"	G1	+35.0	-35.0
48.0" X 56.0"	42.25" X 24.38"	G1	+35.0	-35.0
44.0" X 60.0"	38.25" X 26.38"	G1	+35.0	-35.0
40.0" X 66.0"	34.25" X 29.38"	G1	+35.0	-35.0
36.0" X 74.0"	30.25" X 33.38"	G1	+35.0	-35.0
32.0" X 84.0"	26.25" X 38.38"	G1	+35.0	-35.0
56.0" X 56.0"	50.25" X 24.38"	G1	+30.0	-30.0
52.0" X 60.0"	46.25" X 26.38"	G1	+30.0	-30.0

MAX. FRAME DIMENSION	MAX. D.L.O. DIMENSION	GLASS TYPE	DESIGN PRESSURE (PSF)	
			POSITIVE	NEGATIVE
48.0" X 64.0"	42.25" X 28.38"	G1	+30.0	-30.0
44.0" X 70.0"	38.25" X 31.38"	G1	+30.0	-30.0
40.0" X 78.0"	34.25" X 35.38"	G1	+30.0	-30.0
36.0" X 84.0"	30.25" X 38.38"	G1	+30.0	-30.0
56.0" X 66.0"	50.25" X 29.38"	G1	+25.0	-25.0
52.0" X 72.0"	46.25" X 32.38"	G1	+25.0	-25.0
48.0" X 78.0"	42.25" X 35.38"	G1	+25.0	-25.0
44.0" X 84.0"	38.25" X 38.38"	G1	+25.0	-25.0
56.0" X 84.0"	50.25" X 38.38"	G1	+20.0	-20.0

Documents Prepared By:

**RW** BUILDING CONSULTANTS, INC.  
P.O. Box 230 Valrico FL 33595  
Phone No.: 813.659.9197  
Florida Board of Professional Engineers  
Certificate Of Authorization No. 9813  
*RW* 7-1-14  
Lyndon F. Schmidt, P.E. No. 43409

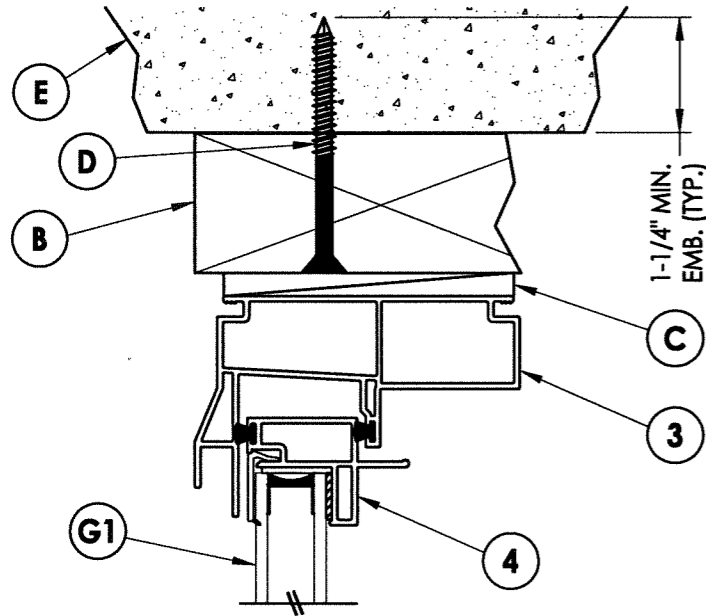
PRODUCT:  
5400 / 5400S SERIES  
Vinyl Double Hung Window

PART OR ASSEMBLY:  
TYPICAL ELEVATION, DESIGN PRESSURES & GENERAL NOTES

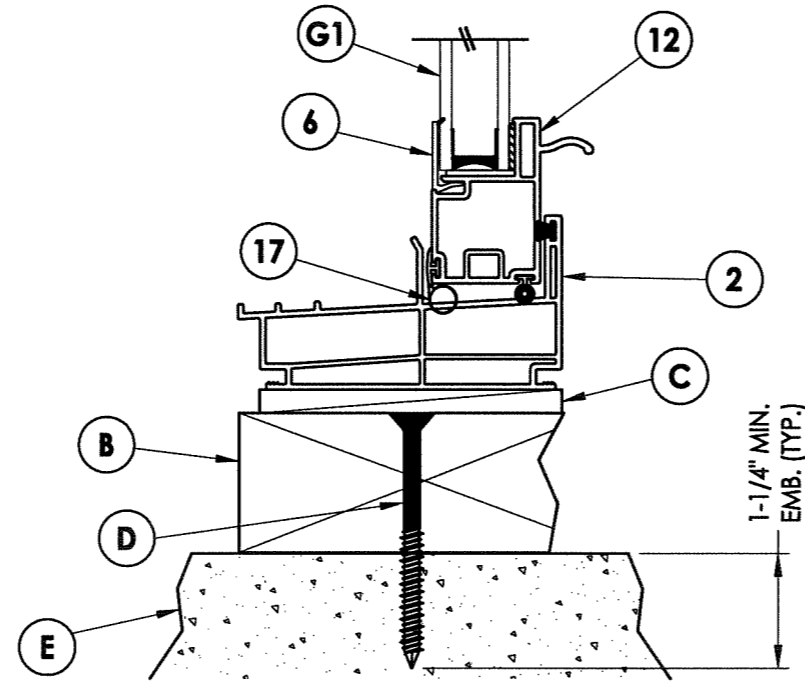
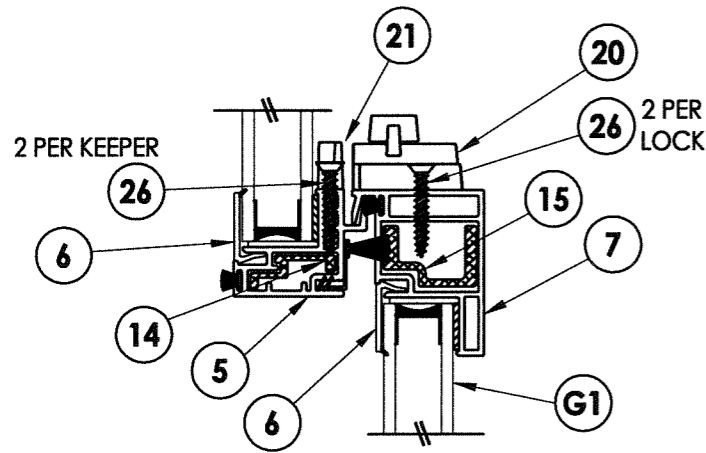
NO.	DATE	BY	REVISIONS

DATE: 6/23/14  
SCALE: N.T.S.  
DWG. BY: JK  
CHK. BY: LFS  
DRAWING NO.: FL-15819.6  
SHEET 1 OF 5

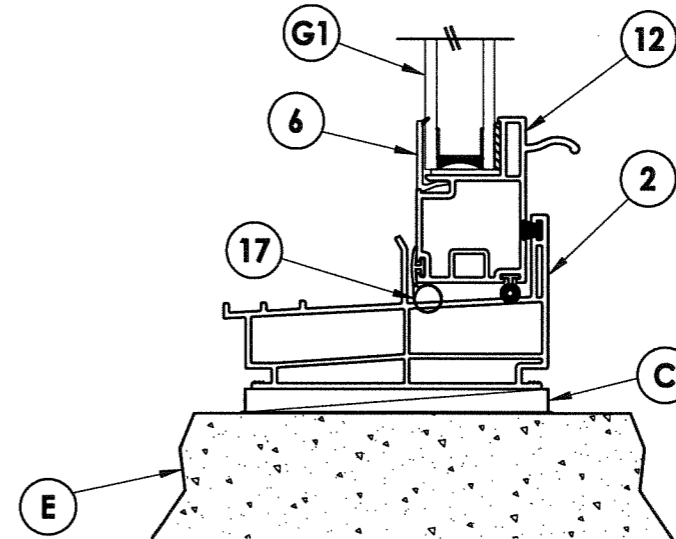




**1 VERTICAL CROSS SECTION**  
3 Shown w/ 2X buck



**2 VERTICAL CROSS SECTION**  
3 Shown w/ 2X buck



**2 VERTICAL CROSS SECTION**  
3 Shown direct to masonry

Documents Prepared By:

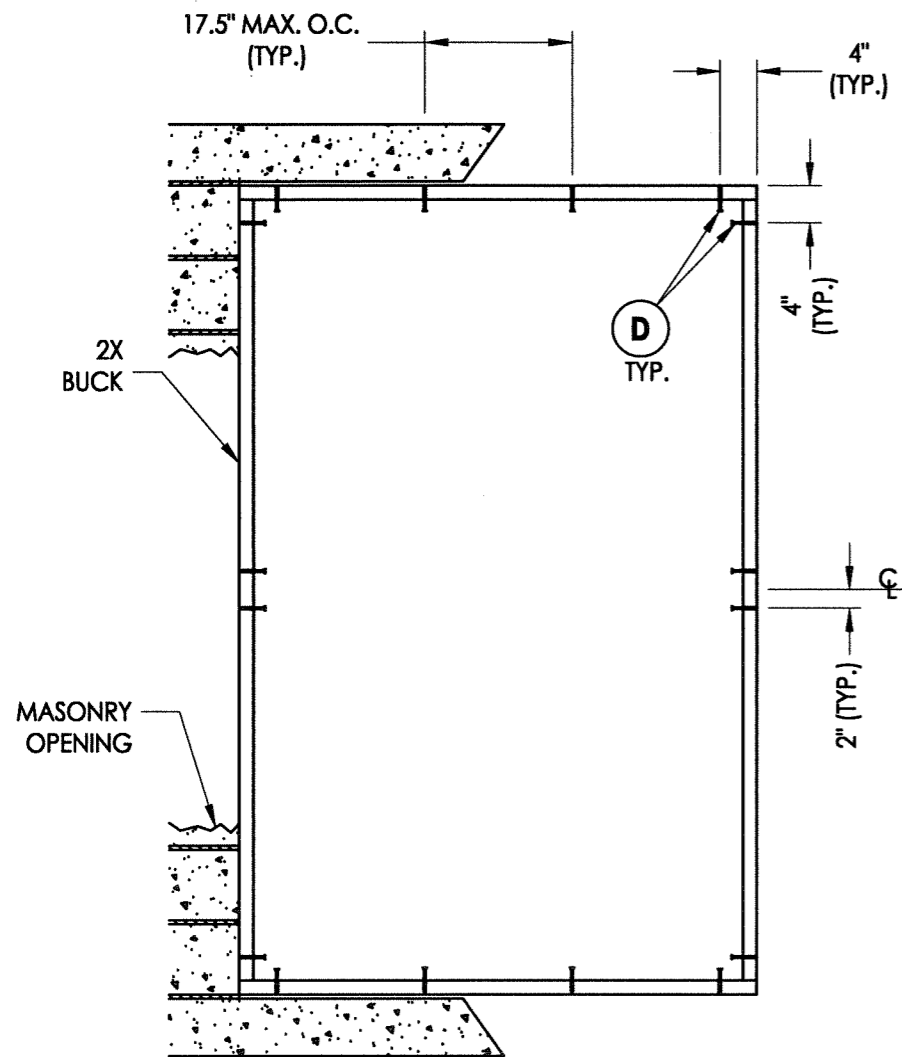
**RW** BUILDING CONSULTANTS, INC.  
P.O. Box 230 Vairco FL 33595  
Phone No.: 813.659.9197  
Florida Board of Professional Engineers  
Certificate Of Authorization No. 9813  
*LFS* 7-1-14  
Lyndon F. Schmidt, P.E. No. 43409

PRODUCT:  
5400 / 5400S SERIES  
Vinyl Double Hung Window

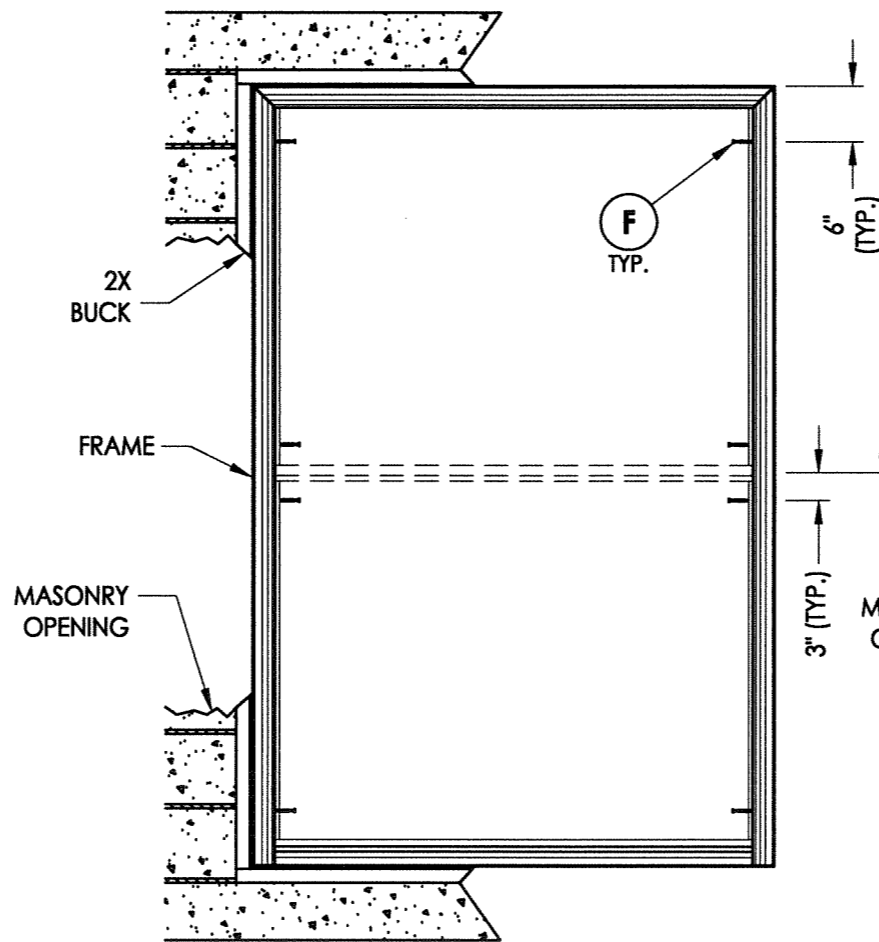
PART OR ASSEMBLY:  
VERTICAL  
CROSS SECTIONS

NO.	DATE	BY

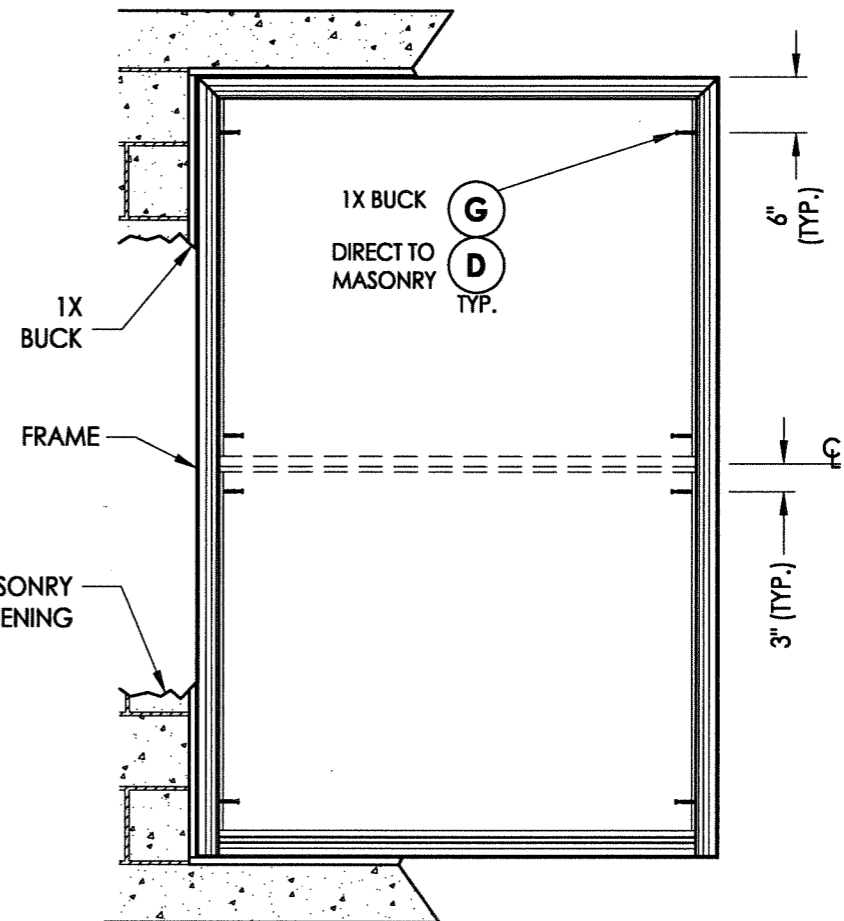
DATE: 6/23/14  
SCALE: N.T.S.  
DWG. BY: JK  
CHK. BY: LFS  
DRAWING NO.:  
FL-15819.6  
SHEET 3 of 5



**BUCK ANCHORING**



**FRAME ANCHORING  
2X Buck**



**FRAME ANCHORING  
1X Buck  
Direct to masonry**

**CONCRETE ANCHOR NOTES:**

1. Substitution of equal concrete anchors from a different supplier may have different edge distance and center distance requirements.
2. Concrete anchor locations at the corners may be adjusted to maintain the min. edge distance to mortar joints. If concrete anchor locations noted as "MAX. ON CENTER" must be adjusted to maintain the min. edge distance to mortar joints, additional concrete anchors may be required to ensure the "MAX. ON CENTER" dimensions are not exceeded.
3. Concrete anchor table:

ANCHOR TYPE	ANCHOR SIZE	MIN. EMBEDMENT	MIN. CLEARANCE TO MASONRY EDGE	MIN. CLEARANCE TO ADJACENT ANCHOR
ITW	1/4"	1-1/4"	2-1/2"	3"
ELCO	1/4"	1-1/4"	1"	4"

Documents Prepared By:

**RW** BUILDING CONSULTANTS, INC.  
 P.O. Box 230 Vairico FL 33595  
 Phone No.: 813.659.9197  
 Florida Board of Professional Engineers  
 Certificate Of Authorization No. 9813  
 Lyndon F. Schmidt, P.E. No. 43409

PRODUCT:  
 5400 / 5400S SERIES  
 Vinyl Double Hung Window

PART OR ASSEMBLY:  
 BUCK AND  
 FRAME ANCHORING

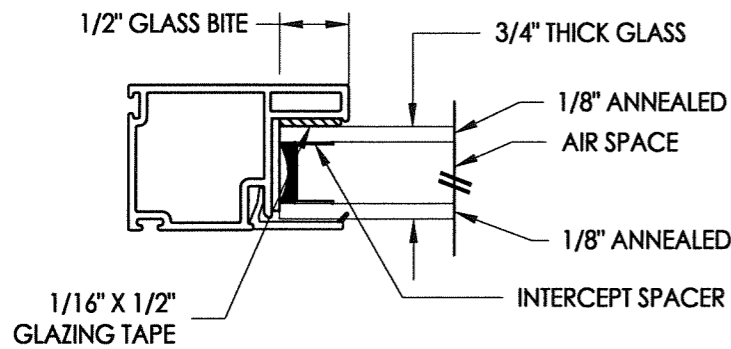
NO.	DATE	BY	REVISIONS

DATE: 6/23/14  
 SCALE: N.T.S.  
 DWG. BY: JK  
 CHK. BY: LFS  
 DRAWING NO.:  
 FL-15819.6  
 SHEET 4 OF 5

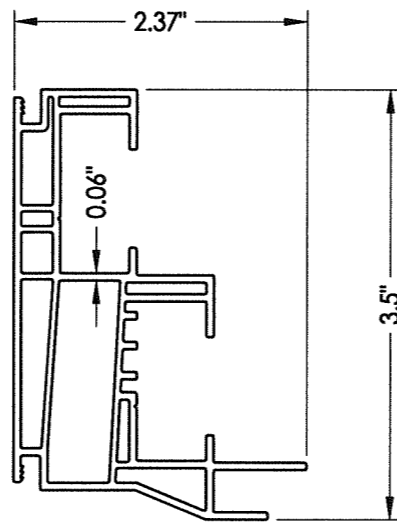
**BILL OF MATERIALS**

ITEM #	DESCRIPTION	MATERIAL
A	1X BUCK SG >= 0.42	WOOD
B	2X BUCK SG >= 0.42	WOOD
C	1/4" MAX. SHIM SPACE	-
D	1/4" X 2-3/4" PFH ELCO OR ITW CONCRETE SCREW	STEEL
E	MASONRY - 3,192 PSI MIN. CONCRETE CONFORMING TO ACI 301 OR HOLLOW BLOCK CONFORMING TO ASTM C90	CONCRETE
F	#8 X 2" PPH WOOD SCREW	STEEL
G	1/4" X 2-1/4" PFH ELCO OR ITW CONCRETE SCREW	STEEL
1	FRAME JAMB*	PVC
2	SILL*	PVC
3	FRAME HEAD*	PVC
4	TOP RAIL UPPER SASH*	PVC
5	KEEPER RAIL UPPER SASH*	PVC
6	GLAZING BEAD*	PVC
7	LOCK RAIL LOWER SASH*	PVC
8	LOWER SASH STILE*	PVC
10	REINFORCEMENT (6005-T5) ALUM	ALUM
11	REINFORCEMENT (6005-T5) ALUM	ALUM
12	BOTTOM RAIL LOWER SASH*	PVC
14	REINFORCEMENT (6005-T5) ALUM	ALUM
15	REINFORCEMENT (6005-T5) ALUM	ALUM
16	WEATHERSTRIP ULTRA FAB .270 PILE - 270 -1875B	-
17	WEATHERSTRIP SILLBULB (AMESBURY 32690)	-
20	LOCK	PVC
21	KEEPER	PVC
26	#8 X 1" TEK SCREW	STEEL

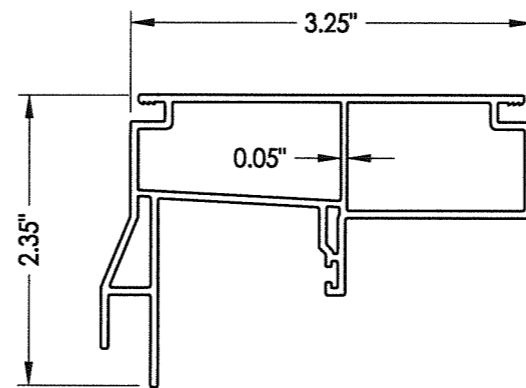
\* THE APPROVED WHITE RIGID PVC EXTERIOR EXTRUSIONS FOR WINDOWS ARE TO BE PRODUCED BY EXTRUDERS LICENSEES IN "AAMA CERTIFICATION PROGRAMS FOR RIGID PVC EXTRUSIONS".



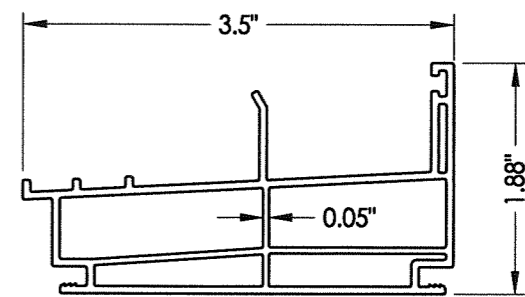
**G1 GLAZING DETAIL**



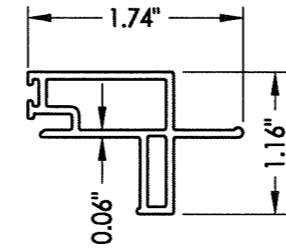
**1 FRAME JAMB**



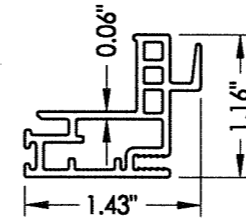
**2 FRAME HEAD**



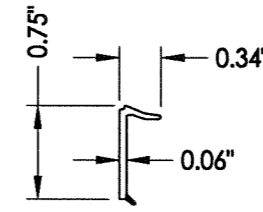
**3 FRAME SILL**



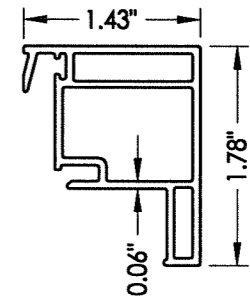
**4 TOP RAIL**  
Upper Sash



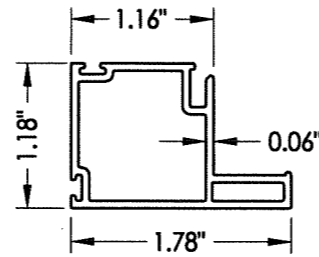
**5 KEEPER RAIL**  
Upper Sash



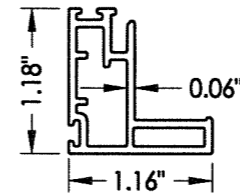
**6 GLAZING BEAD**



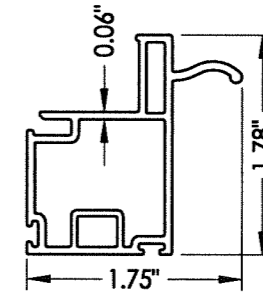
**7 LOCK RAIL**  
Lower Sash



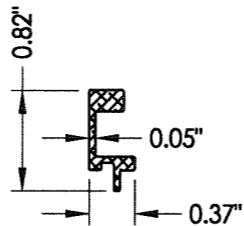
**8 LOWER SASH STILE**



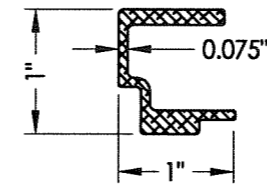
**9 UPPER SASH STILE**



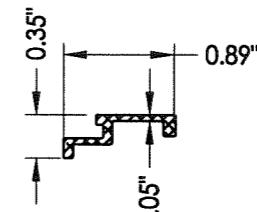
**12 BOTTOM RAIL**  
Lower Sash



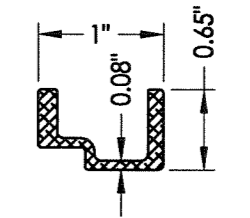
**10 REINFORCEMENT**  
Alum.



**11 REINFORCEMENT**  
Alum.



**14 REINFORCEMENT**  
Alum.



**15 REINFORCEMENT**  
Alum.

Documents Prepared By:

**RW** BUILDING CONSULTANTS, INC.  
P.O. Box 230 Valrico FL 33595  
Phone No.: 813.659.9197  
Florida Board of Professional Engineers  
Certificate Of Authorization No. 9813  
*RWS 7/1/14*

Lyndon F. Schmidt, P.E. No. 43409

PRODUCT: 5400 / 5400S SERIES  
Vinyl Double Hung Window

PART OR ASSEMBLY:  
BILL OF MATERIALS  
COMPONENTS & GLAZING DETAILS

NO.	DATE	BY	REVISIONS

DATE: 6/23/14

SCALE: N.T.S.

DWG. BY: JK

CHK. BY: LFS

DRAWING NO.:

FL-15819.6

SHEET 5 OF 5