

WINCORETM

WINDOWS & DOORS

250 Staunton Turnpike, Parkersburg, WV 26104

7700 / 9900 Series Vinyl Double Hung Window "NON-IMPACT"

GENERAL NOTES

1. This product has been evaluated and is in compliance with the 2010 Florida Building Code (FBC) structural requirements excluding the "High Velocity Hurricane Zone" (HVHZ).
2. Product anchors shall be as listed and spaced as shown on details. Anchor embedment to base material shall be beyond wall dressing or stucco.
3. When used in areas requiring wind borne debris protection this product is required to be protected with an impact resistant covering that complies with Section 1609.1.2 of the FBC.
4. For 2x stud framing construction, anchoring of these units shall be the same as that shown for 2x buck masonry construction.
5. Site conditions that deviate from the details of this drawing require further engineering analysis by a licensed engineer or registered architect.

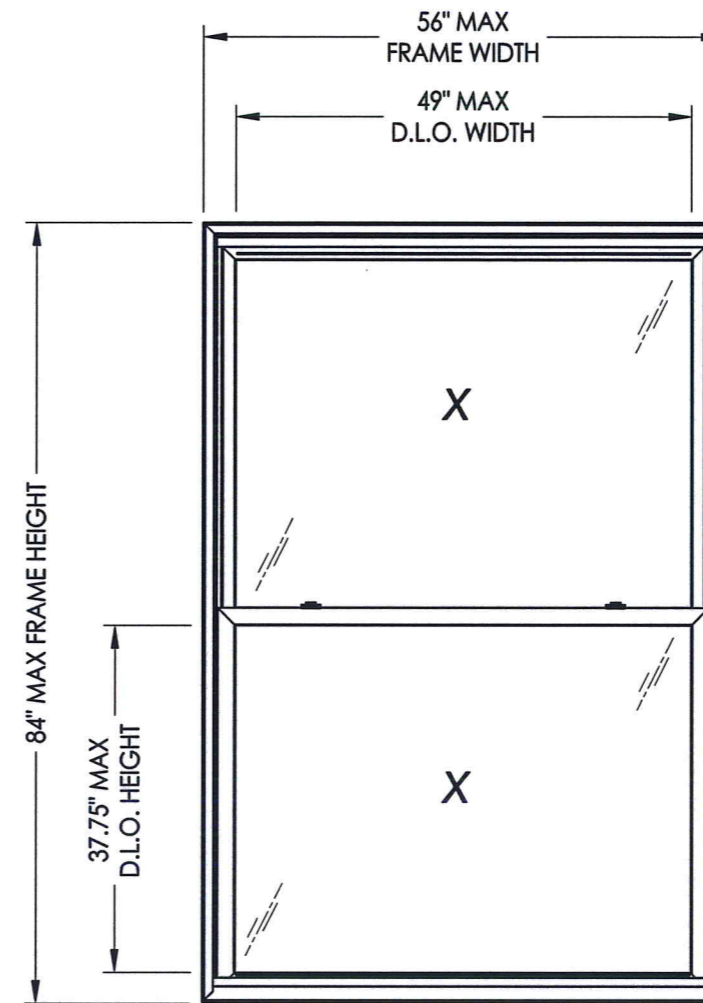


TABLE OF CONTENTS	
SHEET#	DESCRIPTION
1	Typical elevations, design pressures and general notes
2	Horizontal cross sections
3	Vertical cross sections
4	Buck and frame anchoring
5	Bill of materials, components & glazing details

MAX. FRAME DIMENSION	MAX. D.L.O. DIMENSION	GLASS TYPE	DESIGN PRESSURE (PSF)	
			POSITIVE	NEGATIVE
38.0" X 76.0"	31.0" X 33.75"	G1, G2	+50.0	-50.0
56.0" X 60.0"	49.0" X 25.75"	G1, G2	+35.0	-35.0
52.0" X 64.0"	45.0" X 27.75"	G1, G2	+35.0	-35.0
48.0" X 70.0"	41.0" X 30.75"	G1, G2	+35.0	-35.0
44.0" X 76.0"	37.0" X 33.75"	G1, G2	+35.0	-35.0
40.0" X 84.0"	33.0" X 37.75"	G1, G2	+35.0	-35.0

MAX. FRAME DIMENSION	MAX. D.L.O. DIMENSION	GLASS TYPE	DESIGN PRESSURE (PSF)	
			POSITIVE	NEGATIVE
56.0" X 70.0"	49.0" X 30.75"	G1, G2	+30.0	-30.0
52.0" X 74.0"	45.0" X 32.75"	G1, G2	+30.0	-30.0
48.0" X 80.0"	41.0" X 35.75"	G1, G2	+30.0	-30.0
44.0" X 84.0"	37.0" X 37.75"	G1, G2	+30.0	-30.0
56.0" X 84.0"	49.0" X 37.75"	G1, G2	+25.0	-25.0

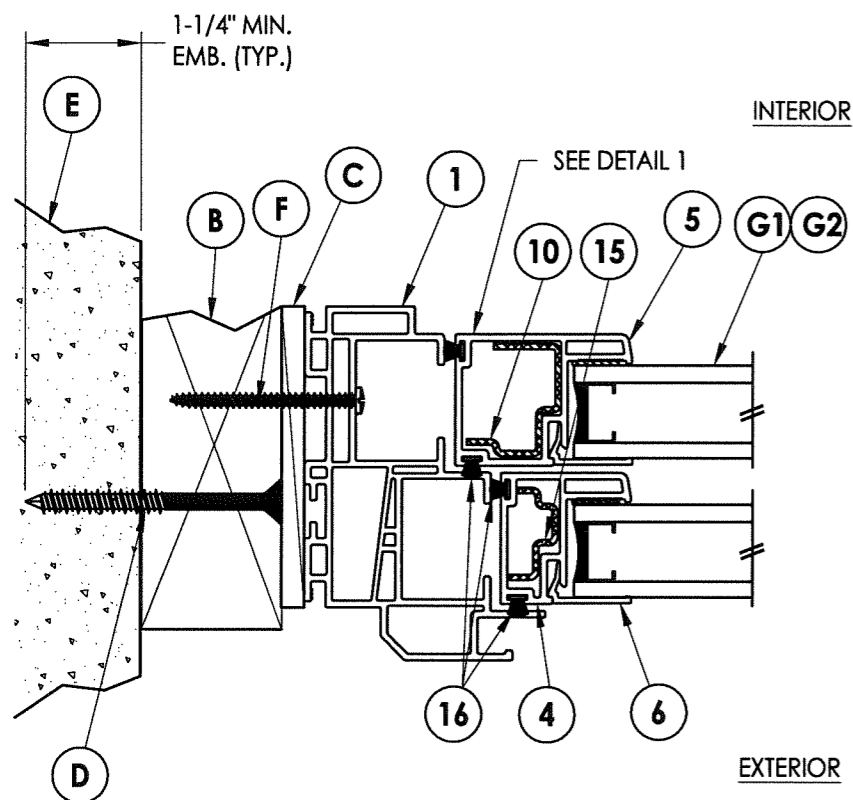
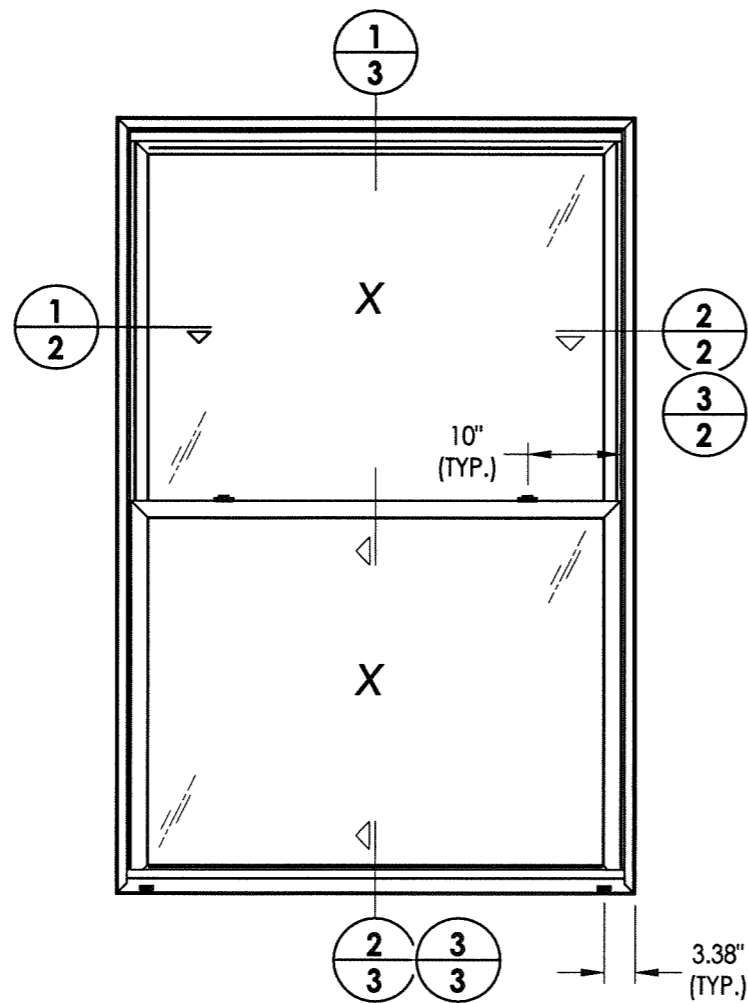
DATE: 6/26/14
 SCALE: N.T.S.
 DWG. BY: JK
 CHK. BY: LFS
 DRAWING NO.: FL-15819.9
 SHEET 1 OF 5

PRODUCT: 7700 / 9900 SERIES Vinyl Double Hung Window
 PART OR ASSEMBLY: TYPICAL ELEVATION, DESIGN PRESSURES & GENERAL NOTES

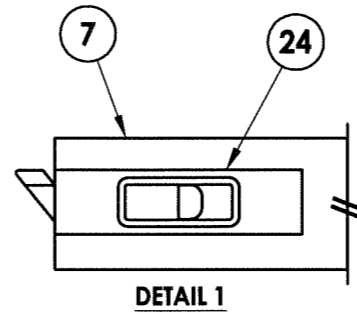
NO.	DATE	REVISIONS
1	8/25/14	REVISED REINFORCEMENT
		BY JK

Documents Prepared By: RW BUILDING CONSULTANTS, INC.
 P.O. Box 230 Vairico FL 33595
 Phone No.: 813.659.9197
 Florida Board of Professional Engineers
 Certificate Of Authorization No. 9813
 LFS 8-25-14
 Lyndon F. Schmidt, P.E. No. 43409

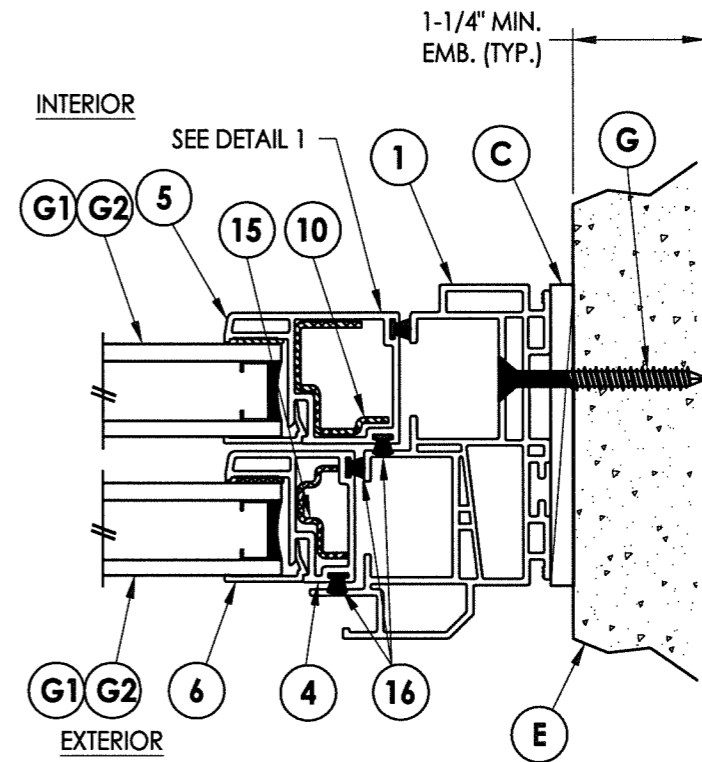
R:\A - Projects\Project Folders\Proj 1701 - 1800\PF 1723\D. RWBC Drawings\FL-15819.9.dwg, 2.5



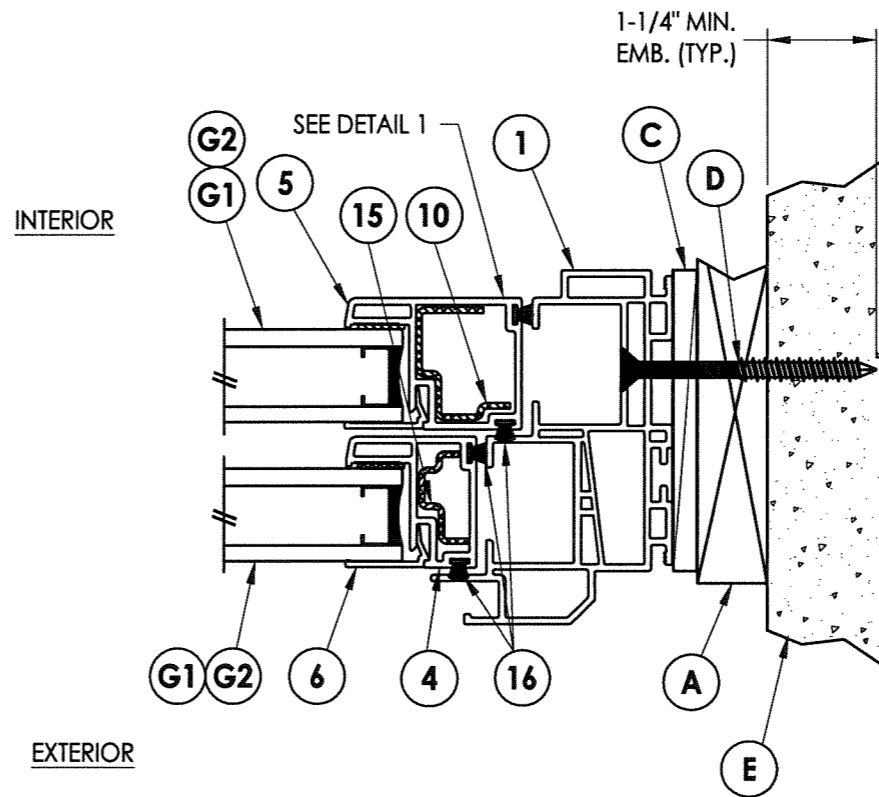
1 HORIZONTAL CROSS SECTION
2 Shown w/ 2X buck



DETAIL 1



2 HORIZONTAL CROSS SECTION
2 Shown direct to masonry



3 HORIZONTAL CROSS SECTION
2 Shown w/ 1X buck

Documents Prepared By:

RW BUILDING CONSULTANTS, INC.
P.O. Box 230 Valrico FL 33595
Phone No.: 813.659.9197
Florida Board of Professional Engineers
Certificate Of Authorization No. 9813
LFS

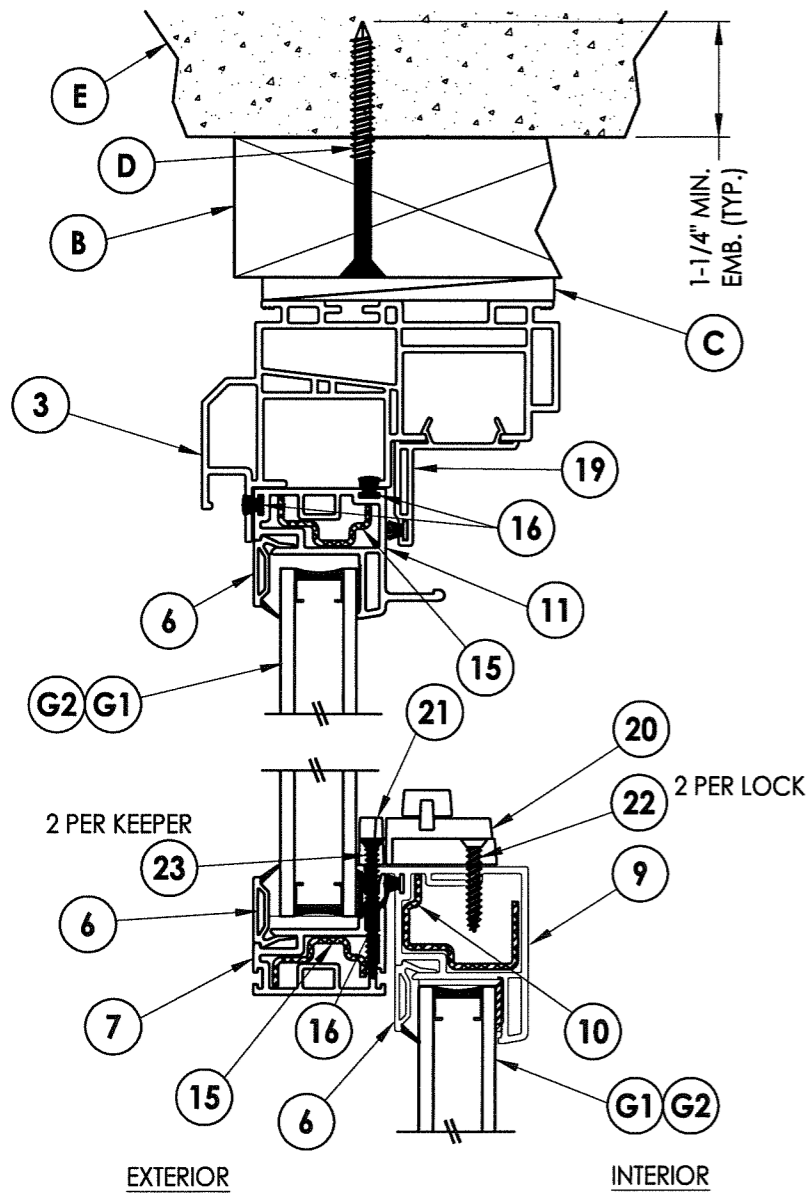
Lyndon F. Schmidt, P.E. No. 43409

PRODUCT:
7700 / 9900 SERIES
Vinyl Double Hung Window

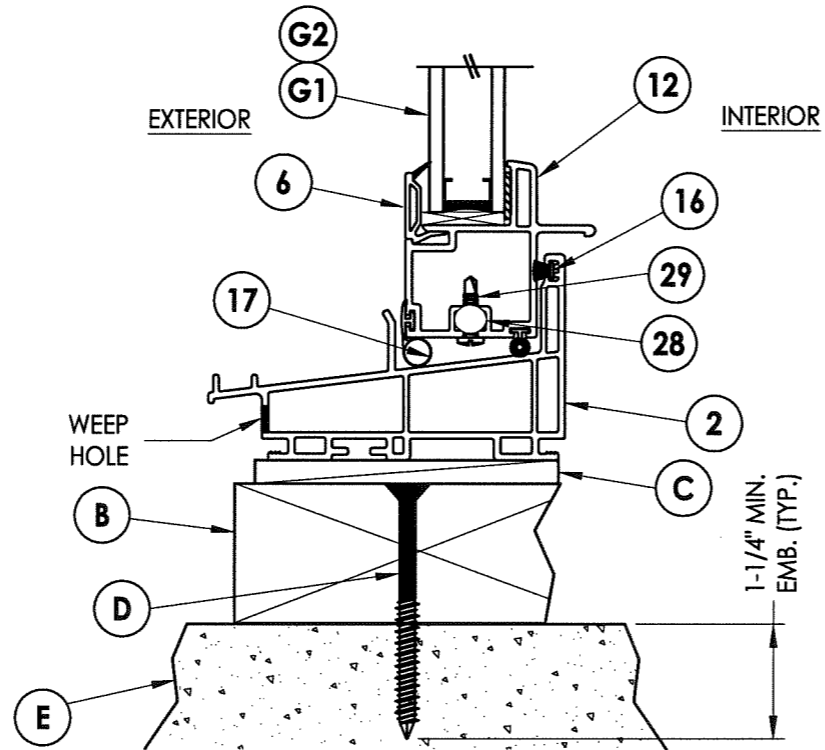
PART OR ASSEMBLY:
HORIZONTAL
CROSS SECTIONS

NO.	DATE	REVISIONS	BY
1	8/25/14	REVISED REINFORCEMENT	JK

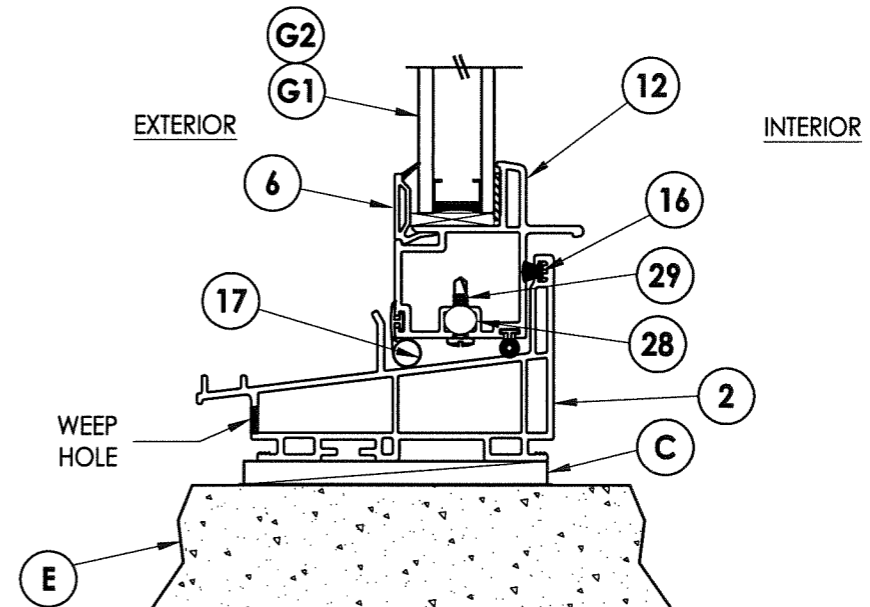
DATE: 6/26/14
SCALE: N.T.S.
DWG. BY: JK
CHK. BY: LFS
DRAWING NO.: FL-15819.9
SHEET 2 OF 5



1 VERTICAL CROSS SECTION
3 Shown w/ 2X buck



2 VERTICAL CROSS SECTION
3 Shown w/ 2X buck



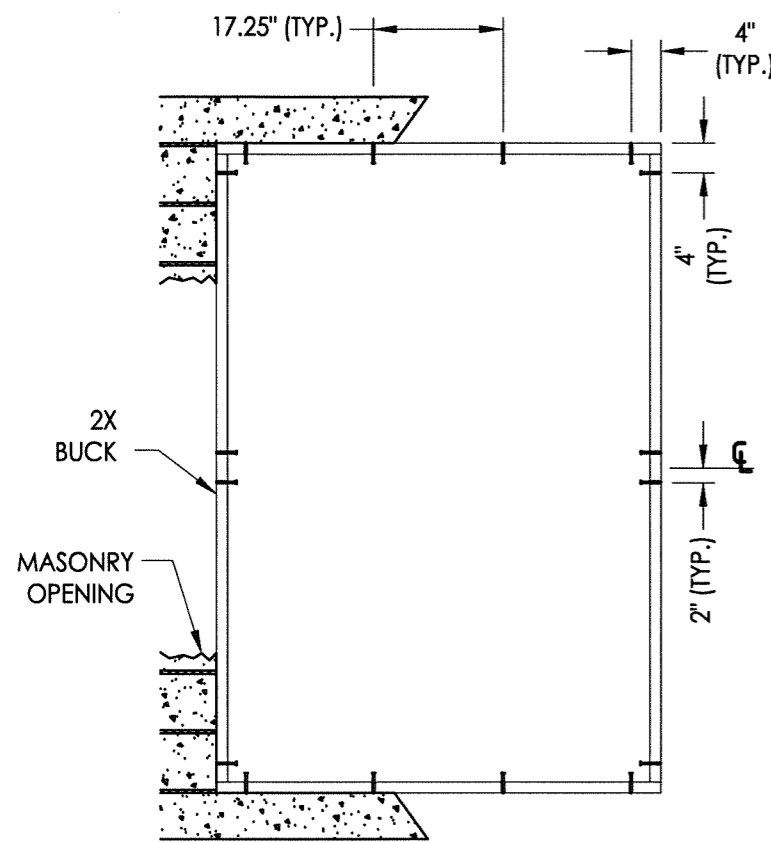
3 VERTICAL CROSS SECTION
3 Shown direct to masonry

Documents Prepared By:
RW BUILDING CONSULTANTS, INC.
 P.O. Box 230 Valrico FL 33595
 Phone No.: 813.659.9197
 Florida Board of Professional Engineers
 Certificate Of Authorization No. 9813
 Lyndon F. Schmidt, P.E. No. 43409

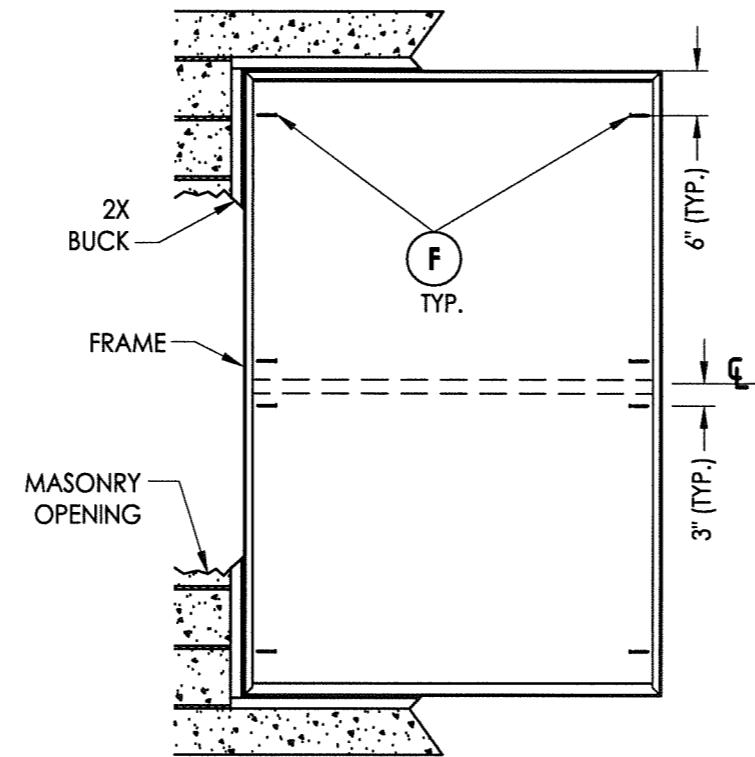
PRODUCT: 7700 / 9900 SERIES
 Vinyl Double Hung Window
 PART OR ASSEMBLY: VERTICAL CROSS SECTIONS

NO.	DATE	REVISIONS	BY
1	8/25/14	REVISED REINFORCEMENT	JK

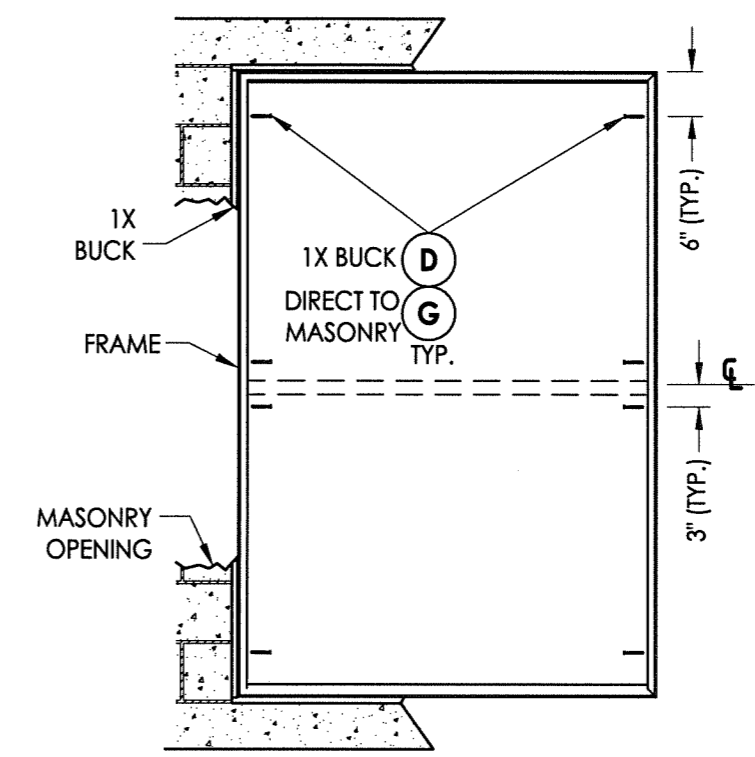
DATE: 6/26/14
 SCALE: N.T.S.
 DWG. BY: JK
 CHK. BY: LFS
 DRAWING NO.: FL-15819.9
 SHEET 3 OF 5



BUCK ANCHORING



FRAME ANCHORING
2X Buck



FRAME ANCHORING
1X Buck
Direct to masonry

CONCRETE ANCHOR NOTES:

1. Substitution of equal concrete anchors from a different supplier may have different edge distance and center distance requirements.
2. Concrete anchor locations at the corners may be adjusted to maintain the min. edge distance to mortar joints. If concrete anchor locations noted as "MAX. ON CENTER" must be adjusted to maintain the min. edge distance to mortar joints, additional concrete anchors may be required to ensure the "MAX. ON CENTER" dimensions are not exceeded.
3. Concrete anchor table:

ANCHOR TYPE	ANCHOR SIZE	MIN. EMBEDMENT	MIN. CLEARANCE TO MASONRY EDGE	MIN. CLEARANCE TO ADJACENT ANCHOR
ITW	1/4"	1-1/4"	2-1/2"	3"
ELCO	1/4"	1-1/4"	1"	4"

Documents Prepared By:

RW BUILDING CONSULTANTS, INC.
P.O. Box 230 Valrico FL 33595
Phone No.: 813.659.9197
Florida Board of Professional Engineers
Certificate Of Authorization No. 9813
LFS
Lyndon F. Schmidt, P.E. No. 43409

PRODUCT:
7700 / 9900 SERIES
Vinyl Double Hung Window

PART OR ASSEMBLY:
BUCK AND
FRAME ANCHORING

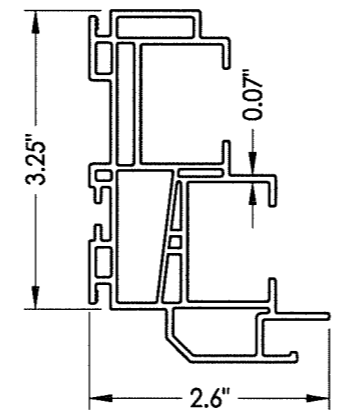
NO.	DATE	REVISIONS	BY
1	8/25/14	REVISED REINFORCEMENT	JK

DATE: 6/26/14
SCALE: N.T.S.
DWG. BY: JK
CHK. BY: LFS
DRAWING NO.:
FL-15819.9
SHEET 4 OF 5

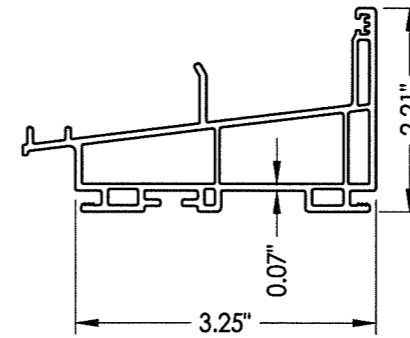
R:\A - Projects\Project Folders\Proj 1701 - 1800\PF 1723\DWG.RWBC Drawings\FL-15819.9.dwg, 5.5

BILL OF MATERIALS		
ITEM #	DESCRIPTION	MATERIAL
A	1X BUCK SG >= 0.42	WOOD
B	2X BUCK SG >= 0.42	WOOD
C	1/4" MAX. SHIM SPACE	-
D	1/4" X 2-3/4" PFH ELCO OR ITW CONCRETE SCREW	STEEL
E	MASONRY - 3,192 PSI MIN. CONCRETE CONFORMING TO ACI 301 OR HOLLOW BLOCK CONFORMING TO ASTM C90	CONCRETE
F	#8 X 2" PPH WOOD SCREW	STEEL
G	1/4" X 2-1/4" PFH ELCO OR ITW CONCRETE SCREW	STEEL
1	FRAME JAMB* (DH 7701)	PVC
2	SILL* (DH 7703)	PVC
3	FRAME HEAD* (DH 7701)	PVC
4	UPPER SASH STILE* (SE 3035)	PVC
5	LOWER SASH STILE* (SE 3045)	PVC
6	GLAZING BEAD*	PVC
7	KEEPER RAIL UPPER SASH* (SE 3034)	PVC
9	LOCK RAIL LOWER SASH* (SE 3046)	PVC
10	REINFORCEMENT (RF 3101)	STEEL
11	TOP RAIL UPPER SASH* (SE 3037)	PVC
12	BOTTOM RAIL LOWER SASH* (SE 3047)	PVC
15	REINFORCEMENT (RF 3001)	STEEL
16	WEATHERSTRIP ULTRA FAB .270 PILE - 270 -1875B	-
17	WEATHERSTRIP SILLBULB (AMESBURY 32690)	-
19	HEAD ADAPTER* (DH 3005)	PVC
20	LOCK 8513 / 8845 LAWRENCE	PVC
21	KEEPER 2700 - 214 LAWRENCE	PVC
22	#8 X 1" PFH (VINYL LOCK SCREWS)	STEEL
23	#6 X 1-1/2" PFH (VINYL LOCK SCREWS)	STEEL
24	TOP SASH TILT LATCH - ASHLAND	PVC
28	PIVOT BAR - CALDWELL	-
29	#8 X 1/2" SELF TAPPING PPH SMS	STEEL

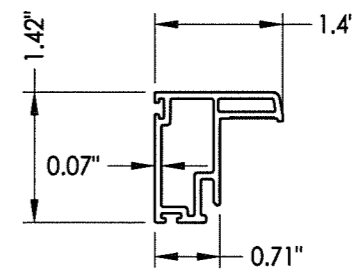
* THE APPROVED WHITE RIGID PVC EXTERIOR EXTRUSIONS FOR WINDOWS ARE TO BE PRODUCED BY EXTRUDERS LICENSEES IN "AAMA CERTIFICATION PROGRAMS FOR RIGID PVC EXTRUSIONS".



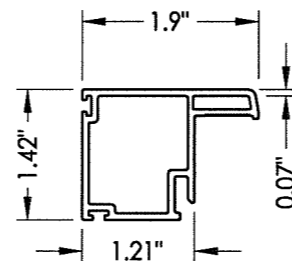
3 **1** **FRAME HEAD & JAMB**



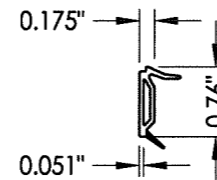
2 **SILL**



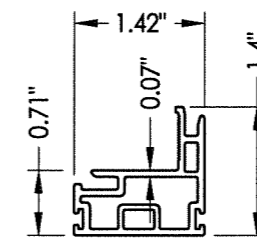
4 **SASH STILE**
Top



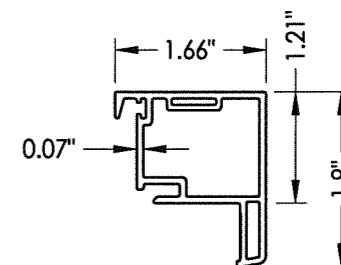
5 **SASH STILE**
Bottom



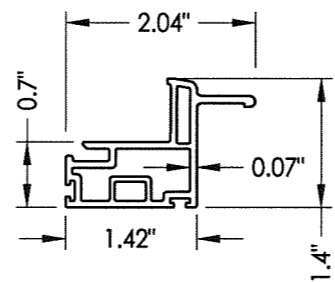
6 **GLAZING BEAD**



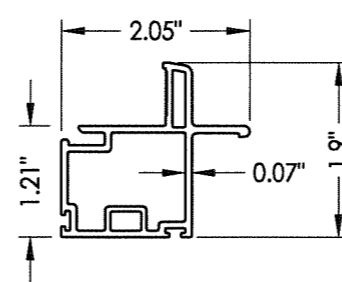
7 **KEEPER RAIL**
Upper Sash



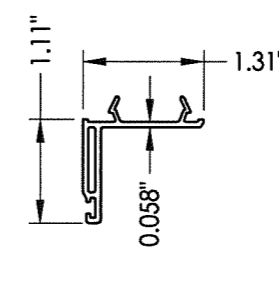
9 **LOCK RAIL**
Lower Sash



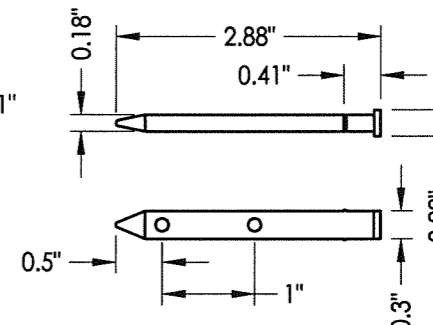
11 **TOP RAIL**
Upper Sash



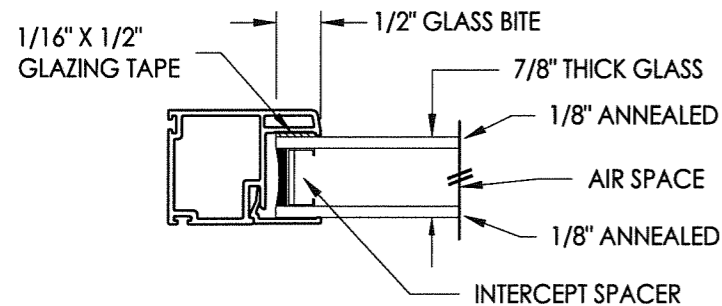
12 **BOTTOM RAIL**
Lower Sash



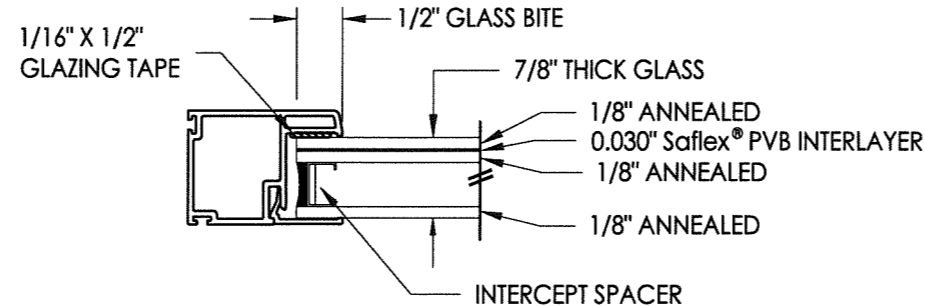
19 **HEAD ADAPTER**



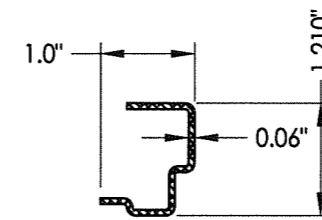
28 **PIVOT BAR**



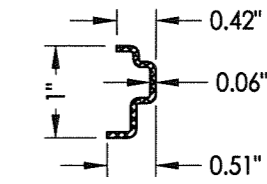
G1 **GLAZING DETAIL**
(See General Note 3, Sheet 1)



G2 **GLAZING DETAIL**
(See General Note 3, Sheet 1)



10 **REINFORCEMENT**
Steel



15 **REINFORCEMENT**
Steel

Documents Prepared By:
RW BUILDING CONSULTANTS, INC.
 P.O. Box 230 Valrico FL 33595
 Phone No.: 813.659.9197
 Florida Board of Professional Engineers
 Certificate Of Authorization No. 9813
 Lyndon F. Schmidt, P.E. No. 43409

PRODUCT: 7700 / 9900 SERIES
 Vinyl Double Hung Window
 PART OR ASSEMBLY:
 BILL OF MATERIALS
 COMPONENTS & GLAZING DETAIL

NO.	DATE	BY	REVISIONS
1	8/25/14	JK	REVISED REINFORCEMENT

DATE: 6/26/14
 SCALE: N.T.S.
 DWG. BY: JK
 CHK. BY: LFS
 DRAWING NO.: FL-15819.9
 SHEET 5 OF 5