

# WINCORE™

## WINDOWS & DOORS

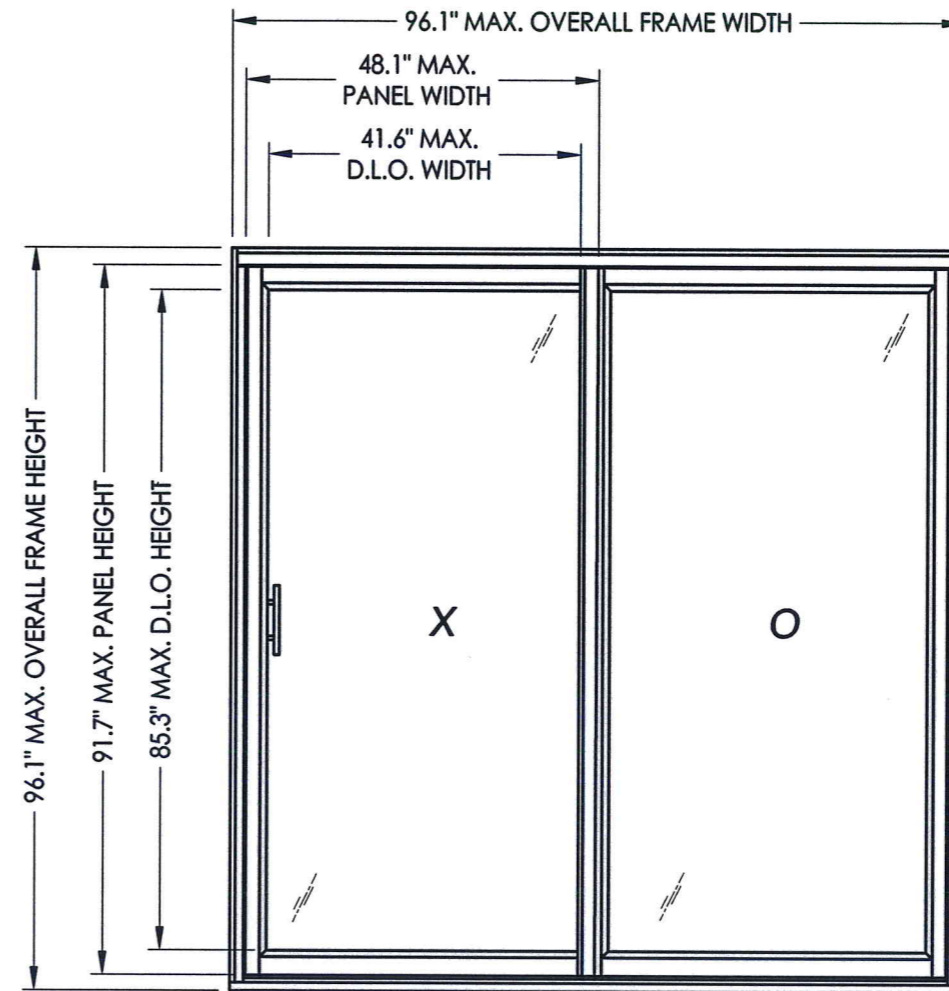
250 Staunton Turnpike, Parkersburg, WV 26104

### 5400/5400S/7700/9900 Series Vinyl Sliding Patio Door "NON-IMPACT"

#### GENERAL NOTES

1. This product has been evaluated and is in compliance with the 2010 Florida Building Code (FBC) structural requirements excluding the "High Velocity Hurricane Zone" (HVHZ).
2. Product anchors shall be as listed and spaced as shown on details. Anchor embedment to base material shall be beyond wall dressing or stucco.
3. When used in areas requiring wind borne debris protection this product is required to be protected with an impact resistant covering that complies with Section 1609.1.2 of the 2010 FBC.
4. For 2x stud framing construction, anchoring of these units shall be the same as that shown for 2x buck masonry construction.
5. Site conditions that deviate from the details of this drawing require further engineering analysis by a licensed engineer or registered architect.

| TABLE OF CONTENTS |   |
|-------------------|---|
| SHEET#            | DESCRIPTION   |
| 1                 | Typical elevation, design pressures & general notes |
| 2                 | Horizontal cross sections                           |
| 3                 | Vertical cross sections                             |
| 4                 | Horizontal cross sections                           |
| 5                 | Vertical cross sections                             |
| 6                 | Buck & frame anchoring                              |
| 7                 | Buck & frame anchoring                              |
| 8                 | Glazing details                                     |
| 9                 | Bill of materials & components                      |



| OVERALL FRAME DIMENSION | MAX. PANEL DIMENSION | MAX. D.L.O. DIMENSION | GLASS TYPE | DESIGN PRESSURE (PSF) |          |
|-------------------------|----------------------|-----------------------|------------|-----------------------|----------|
|                         |                      |                       |            | POSITIVE              | NEGATIVE |
| 70.9" x 81.9"           | 35.4" X 77.6"        | 28.9" X 71.2"         | G1, G2, G3 | +60.0                 | -60.0    |
| 94.5" x 79.5"           | 47.2" X 75.2"        | 40.7" X 68.8"         | G1, G2, G3 | +40.0                 | -40.0    |
| 96.1" x 96.1"           | 48.1" X 91.7"        | 41.6" X 85.3"         | G1, G2, G3 | +35.0                 | -35.0    |

Documents Prepared By:

**RW** BUILDING CONSULTANTS, INC.  
P.O. Box 230 Valrico FL 33595  
Phone No.: 813.659.9197  
Florida Board of Professional Engineers  
Certificate Of Authorization No. 9813  
8.25-14  
Lyndon F. Schmidt, P.E. No. 43409

PRODUCT:  
5400/5400S/7000/9900 SERIES  
SLIDING PATIO DOORS

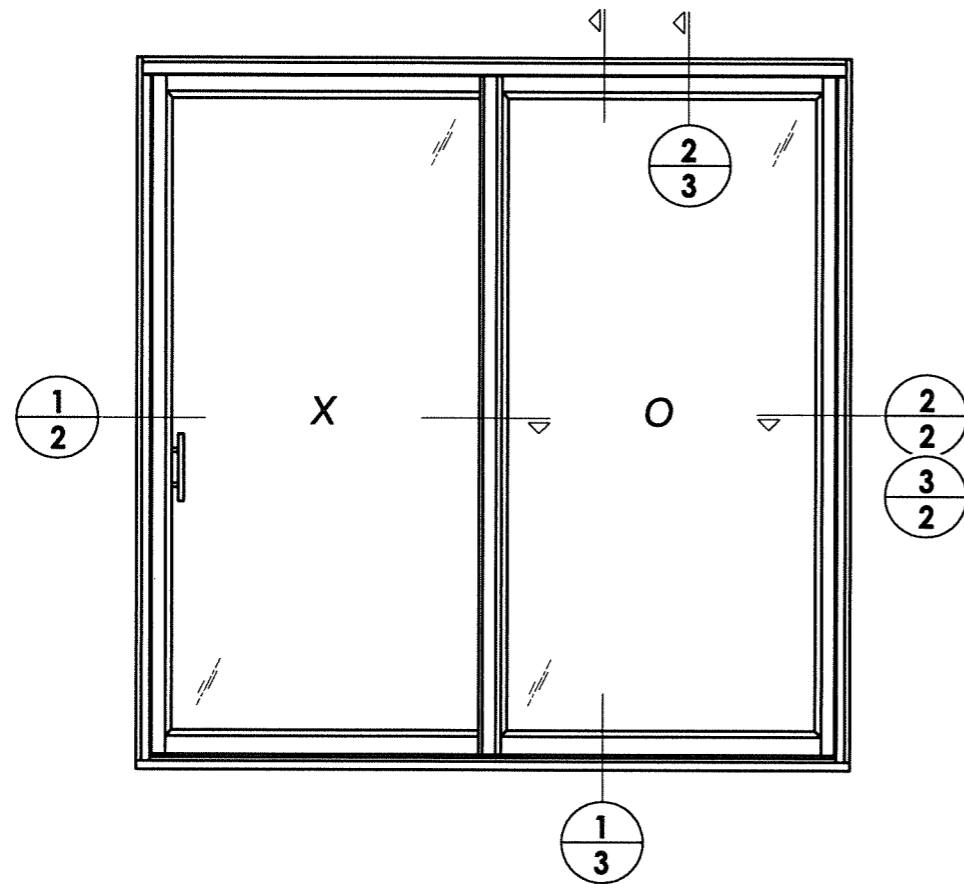
PART OR ASSEMBLY:  
TYPICAL ELEVATION, DESIGN  
PRESSURES & GENERAL NOTES

| REVISED GLAZING & SERIES NO. | JK   |
|------------------------------|------|
| ADDED FRAME SIZE & DETAILS   | LFS  |
| ADD SIZE                     | JK   |
| DATE                         | BY   |
| 3 8/14/14                    | JK   |
| 2 7/7/14                     | LFS  |
| 1 10/29/13                   | JK   |
| NO.                          | DATE |

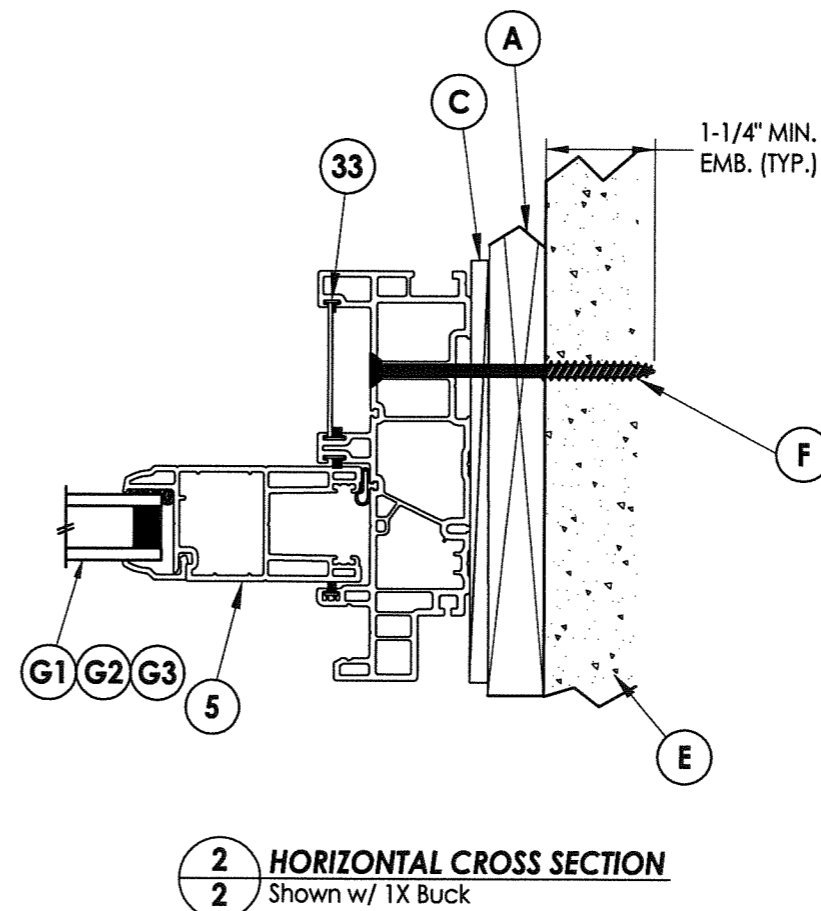
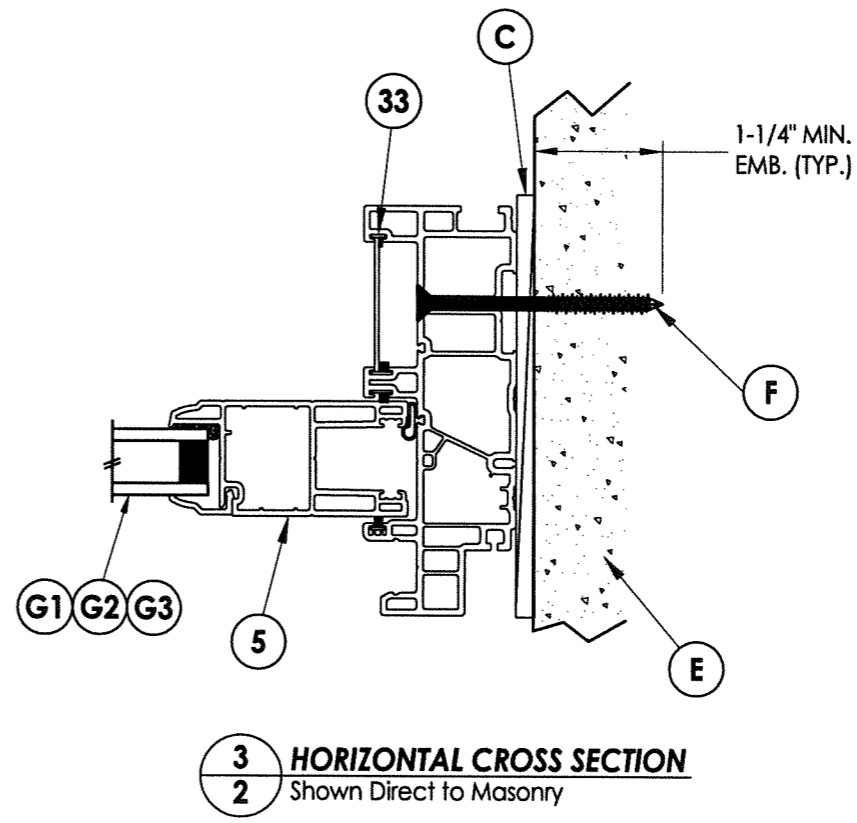
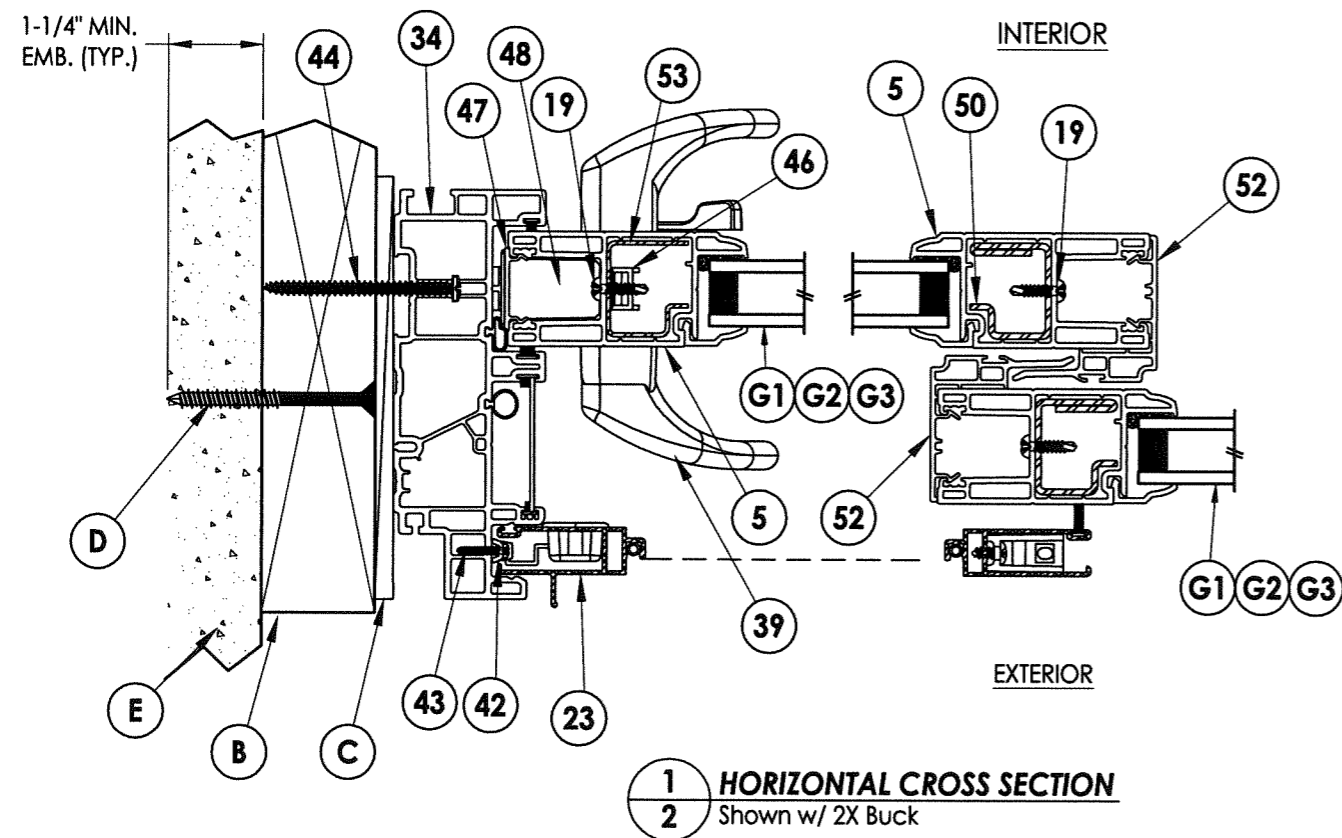
#### REVISIONS

DATE: 4/02/13  
SCALE: N.T.S.  
DWG. BY: JK  
CHK. BY: LFS  
DRAWING NO.:  
FL-16216.4  
SHEET 1 OF 9

R:\A - Projects\Project Folders\Proj 1701 - 1800\PF 1709\DWG\RWBC Drawings\New 2014\FL-16216.4-7.dwg, FL-16216.4



ANCHORING UP TO 94.5" X 79.5" FRAME SIZE



Documents Prepared By:

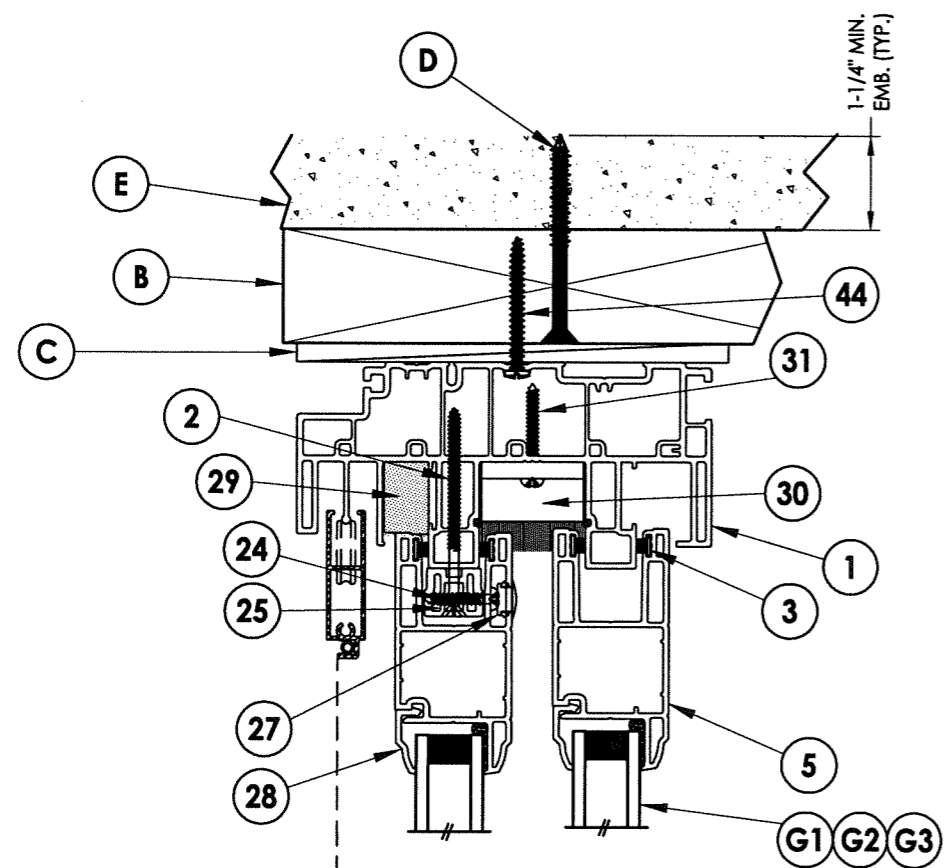
**RW** BUILDING CONSULTANTS, INC.  
P.O. Box 230 Valrico FL 33595  
Phone No.: 813.659.9197  
Florida Board of Professional Engineers  
Certificate Of Authorization No. 9813  
17-R 8.25.14  
Lyndon F. Schmidt, P.E. No. 43409

PRODUCT:  
5400/5400S/7000/9900 SERIES  
SLIDING PATIO DOORS

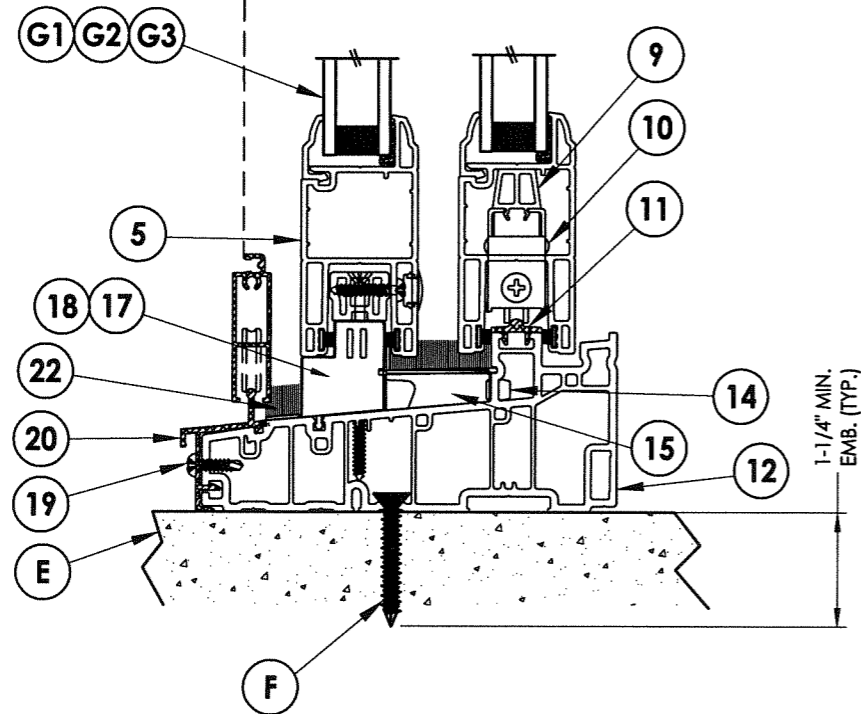
PART OR ASSEMBLY:  
HORIZONTAL  
CROSS SECTIONS

| NO | DATE     | REVISIONS                    | BY  |
|----|----------|------------------------------|-----|
| 3  | 8/14/14  | REVISED GLAZING & SERIES NO. | JK  |
| 2  | 7/7/14   | ADDED FRAME SIZE & DETAILS   | LFS |
| 1  | 10/29/13 | ADD SIZE                     | JK  |

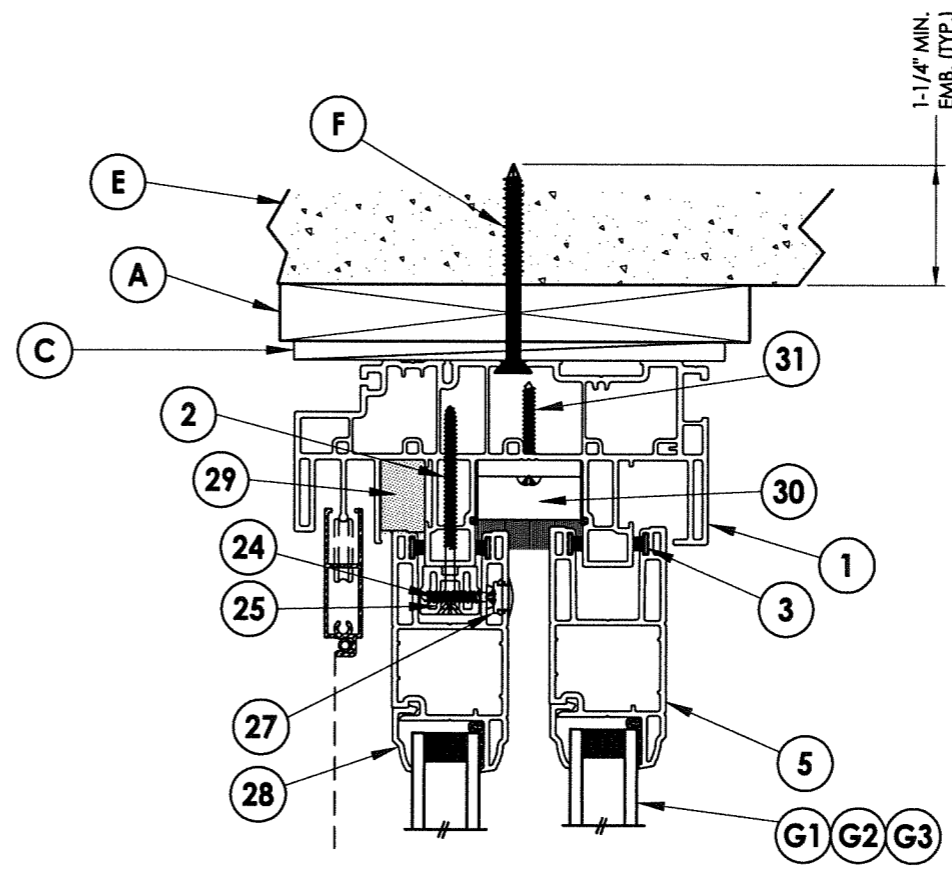
DATE: 4/02/13  
SCALE: N.T.S.  
DWG. BY: JK  
CHK. BY: LFS  
DRAWING NO.: FL-16216.4  
SHEET 2 OF 9



EXTERIOR INTERIOR



**1 VERTICAL CROSS SECTION**  
**3** Shown w/ 2X Buck at head & Direct to Masonry @ sill



EXTERIOR INTERIOR

**2 VERTICAL CROSS SECTION**  
**3** Shown w/ 1X Buck

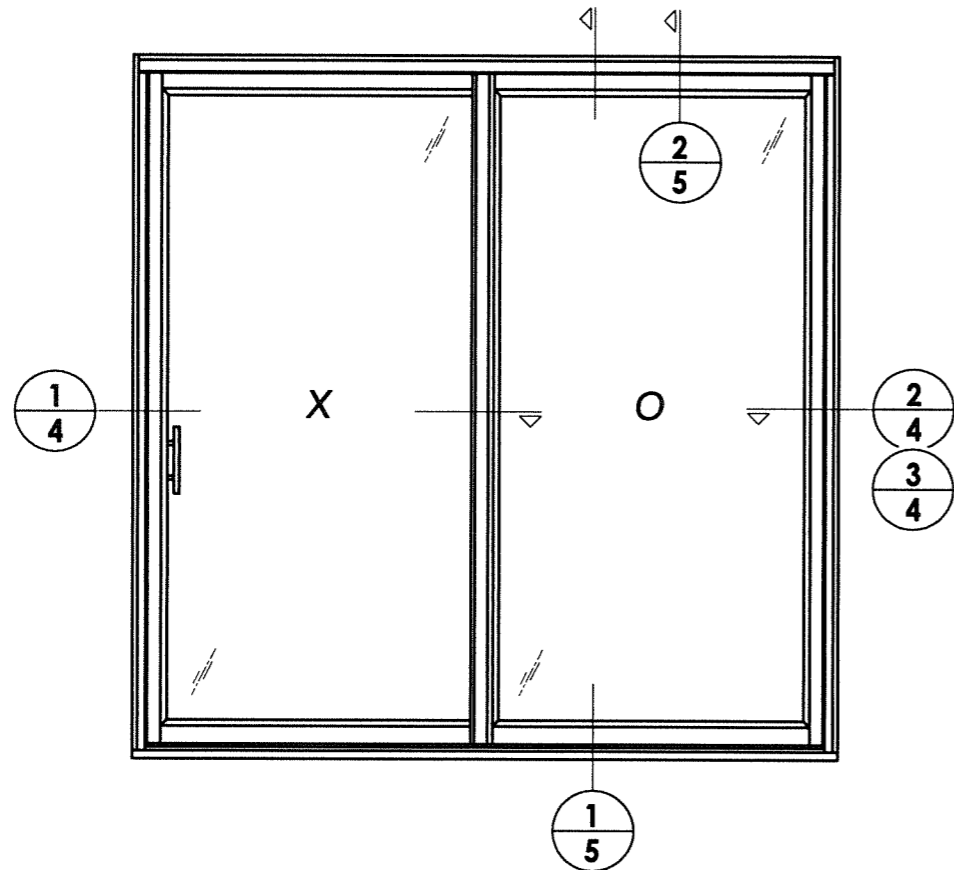
Documents Prepared By:  
**RW** BUILDING CONSULTANTS, INC.  
 P.O. Box 230 Valrico FL 33595  
 Phone No.: 813.659.9197  
 Florida Board of Professional Engineers  
 Certificate of Authorization No. 9813  
*LFS* 8-25-14  
 Lyndon F. Schmidt, P.E. No. 43409

PRODUCT:  
**5400/5400S/7000/9900 SERIES**  
**SLIDING PATIO DOORS**

PART OR ASSEMBLY:  
**VERTICAL**  
**CROSS SECTIONS**

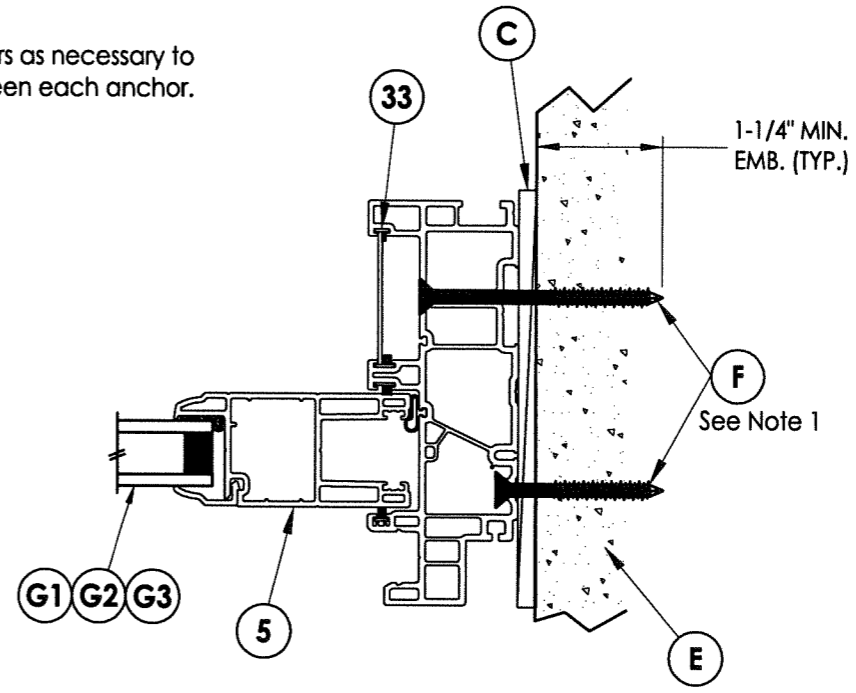
| NO. | DATE     | REVISIONS                    | BY  |
|-----|----------|------------------------------|-----|
| 3   | 8/14/14  | REVISED GLAZING & SERIES NO. | JK  |
| 2   | 7/7/14   | ADDED FRAME SIZE & DETAILS   | LFS |
| 1   | 10/29/13 | ADD SIZE                     | JK  |

DATE: 4/02/13  
 SCALE: N.T.S.  
 DWG. BY: JK  
 CHK. BY: LFS  
 DRAWING NO.: FL-16216.4  
 SHEET 3 OF 9

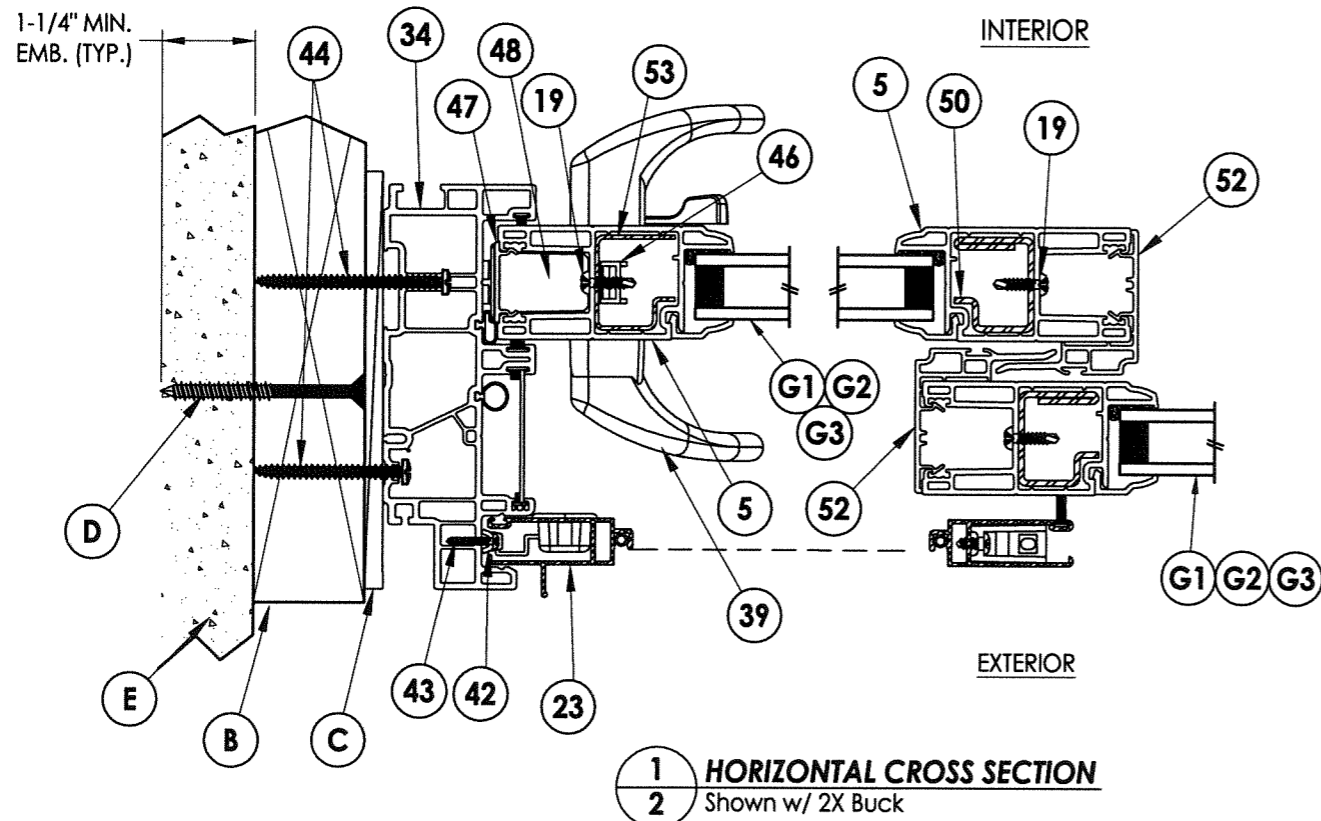


ANCHORING UP TO 96.1" X 96.1" FRAME SIZE

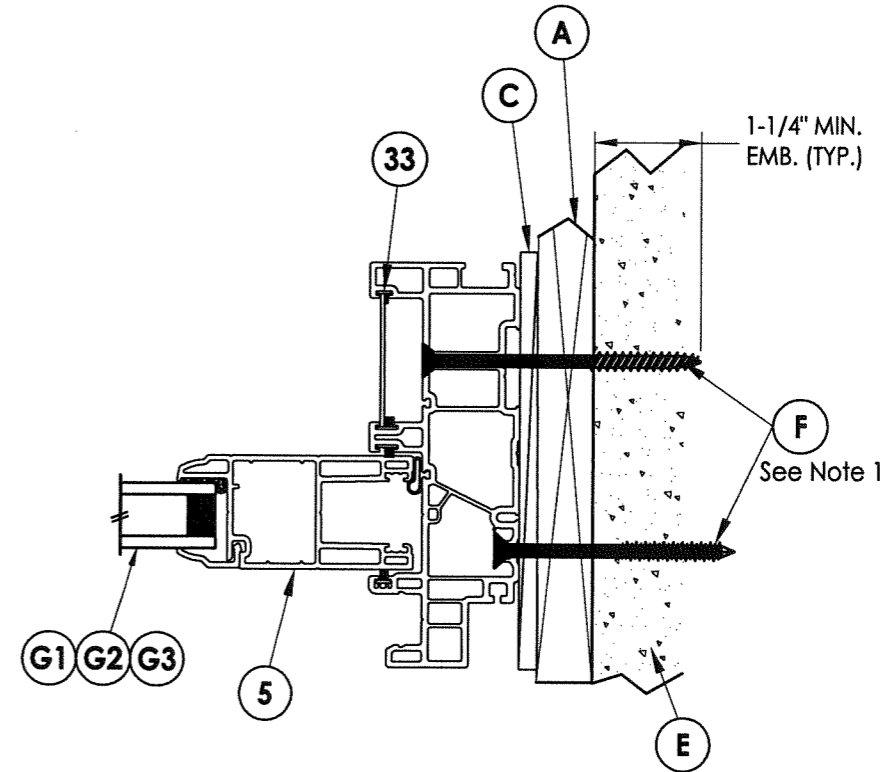
NOTES:  
1. Stagger concrete anchors as necessary to maintain min. of 4" between each anchor.



3 HORIZONTAL CROSS SECTION  
4 Shown Direct to Masonry



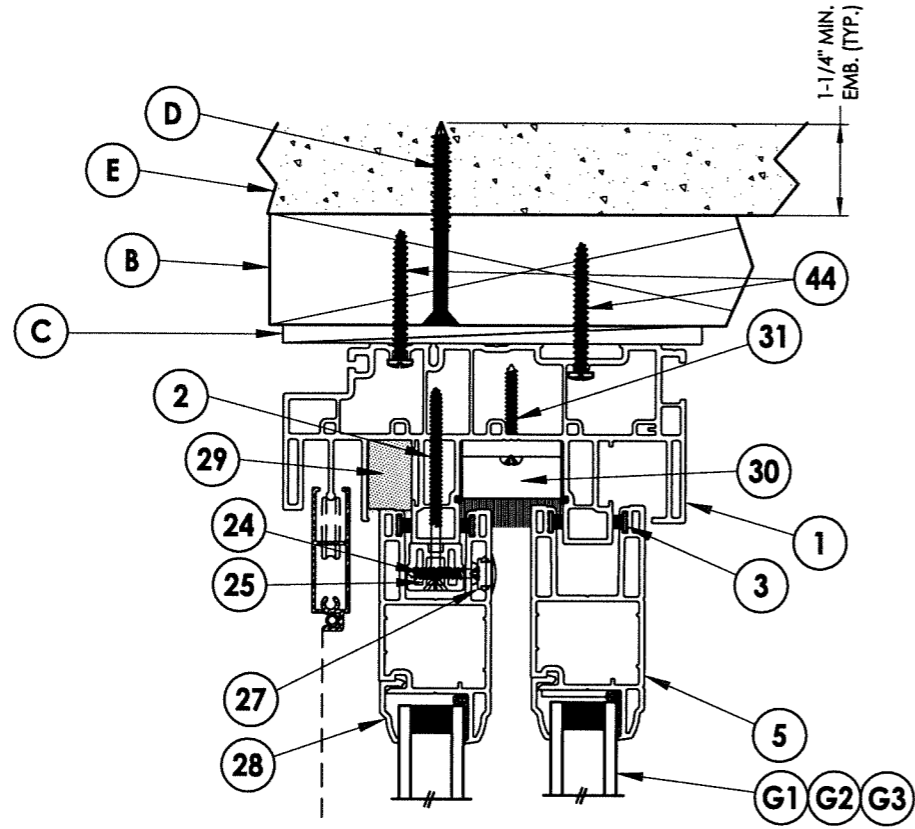
1 HORIZONTAL CROSS SECTION  
2 Shown w/ 2X Buck



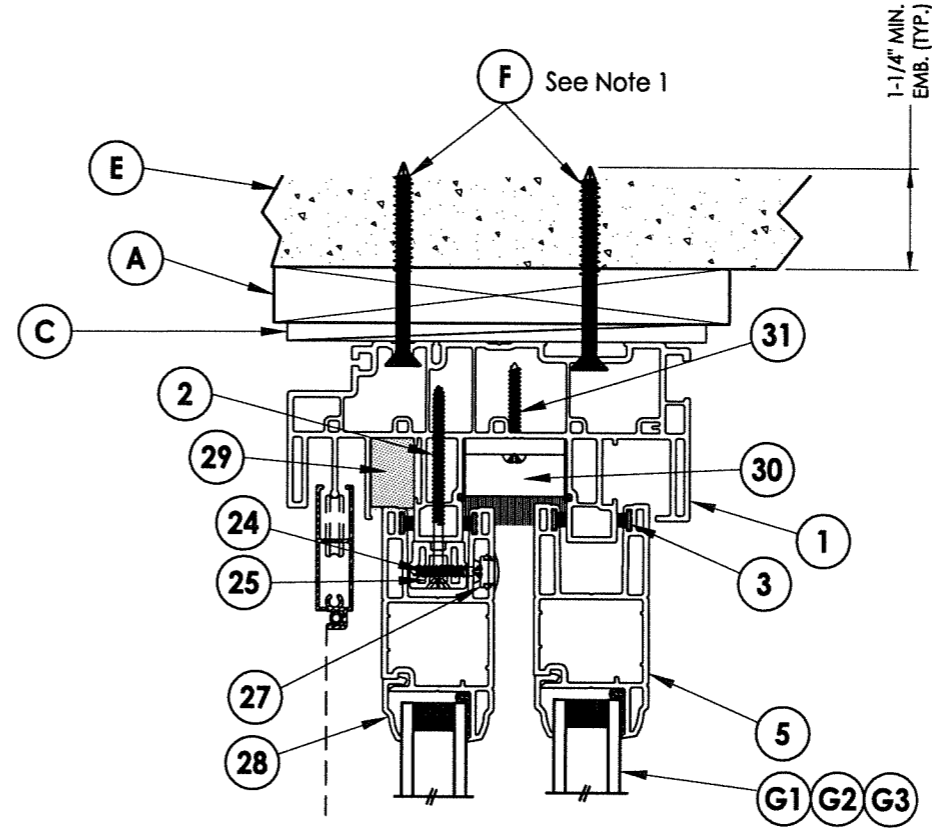
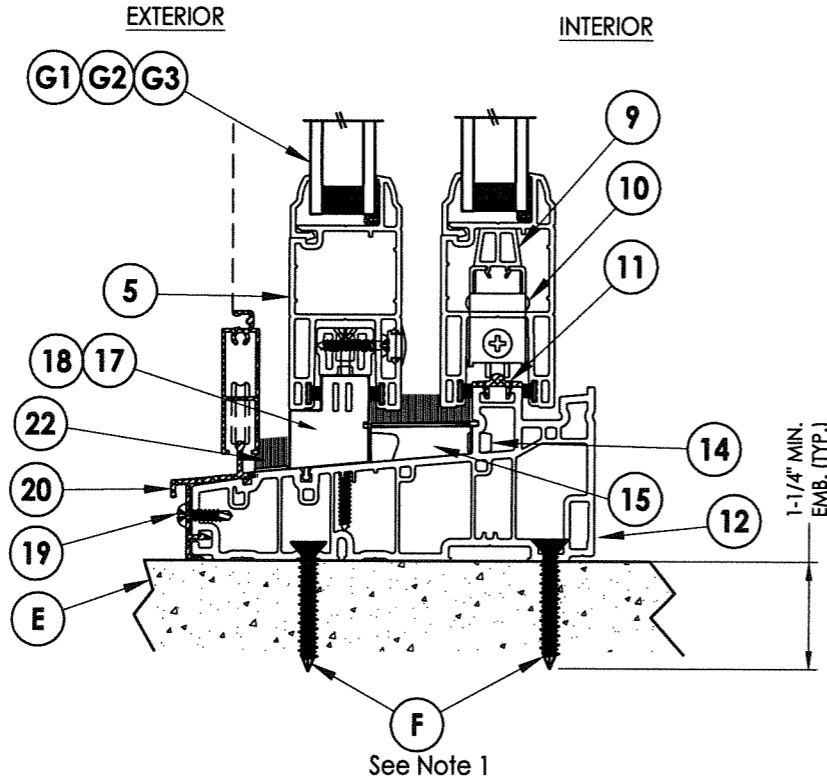
2 HORIZONTAL CROSS SECTION  
4 Shown w/ 1X Buck

|                        |            |  |      |
|------------------------|------------|--|------|
| Documents Prepared By: |            | BUILDING CONSULTANTS, INC.<br>P.O. Box 230 Vairico FL 33595<br>Phone No.: 813.659.9197 |      |
| PRODUCT:               |            | 5400/5400S/7000/9900 SERIES<br>SLIDING PATIO DOORS                                     |      |
| PART OR ASSEMBLY:      |            | HORIZONTAL<br>CROSS SECTIONS   |      |
| DATE:                  | 4/02/13    | REVISED GLAZING & SERIES NO.   | JK   |
| SCALE:                 | N.T.S.     | ADDED FRAME SIZE & DETAILS   | LFS  |
| DWG. BY:               | JK         | ADD SIZE   | JK   |
| CHK. BY:               | LFS        | NO.  | DATE |
| DRAWING NO.:           | FL-16216.4 | REVISIONS  |      |
| SHEET                  | 4 OF 9     | BY   |      |

Florida Board of Professional Engineers  
Certificate of Authorization No. 9813  
LFS 8-25-14  
Lyndon F. Schmidt, P.E. No. 43409



**1** VERTICAL CROSS SECTION  
**5** Shown w/ 2X Buck at head & Direct to Masonry @ sill



**2** VERTICAL CROSS SECTION  
**5** Shown w/ 1X Buck

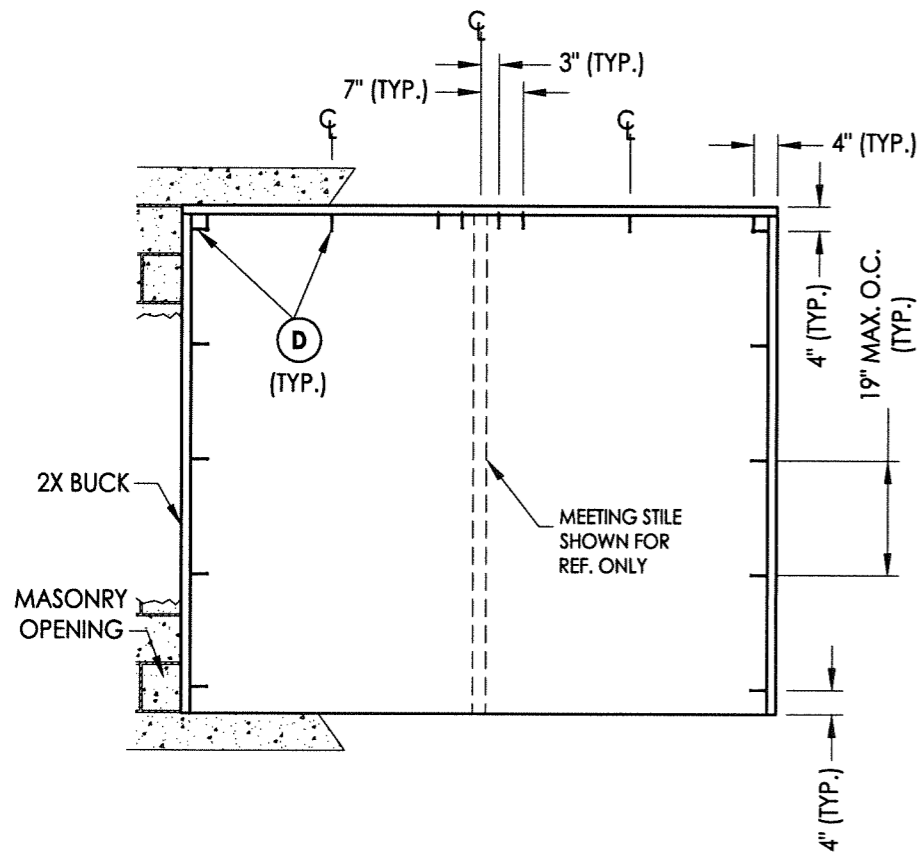
- NOTES:  
 1. Stagger concrete anchors as necessary to maintain min. of 4" between each anchor.

|              |            |
|--------------|------------|
| DATE:        | 4/02/13    |
| SCALE:       | N.T.S.     |
| DWG. BY:     | JK         |
| CHK. BY:     | LFS        |
| DRAWING NO.: | FL-16216.4 |
| SHEET        | 5 of 9     |

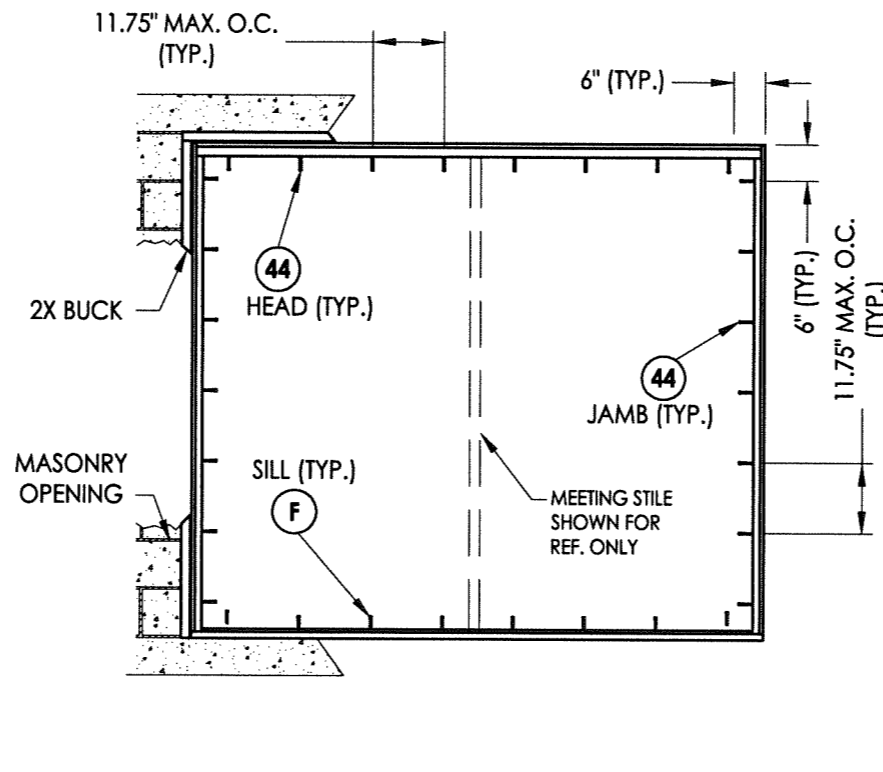
|                   |  |
|-------------------|--|
| PRODUCT:          | 5400/5400S/7000/9900 SERIES<br>SLIDING PATIO DOORS |
| PART OR ASSEMBLY: | VERTICAL<br>CROSS SECTIONS                         |

| REVISIONS |                                      |
|-----------|--------------------------------------|
| NO.       | DATE                                 |
| 3         | 8/14/14 REVISED GLAZING & SERIES NO. |
| 2         | 7/7/14 ADDED FRAME SIZE & DETAILS    |
| 1         | 10/29/13 ADD SIZE                    |
|           | BY                                   |

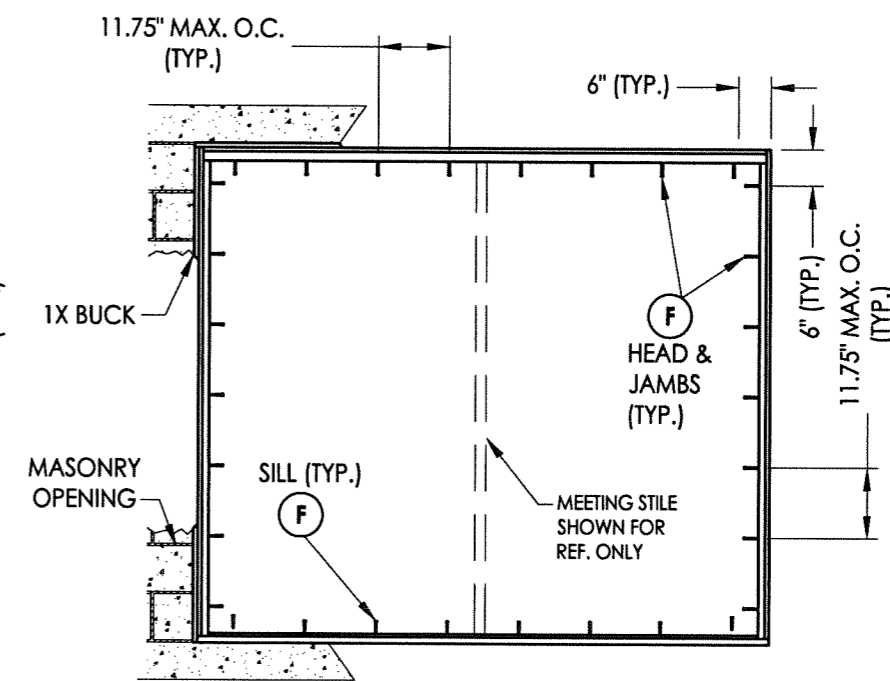
Documents Prepared By:  
**RW** BUILDING CONSULTANTS, INC.  
 P.O. Box 230 Valrico FL, 33595  
 Phone No.: 813.659.9197  
 Florida Board of Professional Engineers  
 Certificate of Authorization No. 9813  
 Lyndon F. Schmidt, P.E. No. 43409



**BUCK ANCHORING  
MASONRY**



**FRAME ANCHORING  
2X Buck**



**FRAME ANCHORING  
1X Buck, Direct to Masonry**

**ANCHORING UP TO 94.5" X 79.5" FRAME SIZE**

NOTE: One (1) ANCHOR REQ'D @ EACH LOCATION SHOWN

**CONCRETE ANCHOR NOTES:**

1. Substitution of equal concrete anchors from a different supplier may have different edge distance and center distance requirements.
2. Concrete anchor locations at the corners may be adjusted to maintain the min. edge distance to mortar joints. Concrete anchor locations noted as "MAX. ON CENTER" must be adjusted to maintain the min. edge distance to mortar joints, additional concrete anchors may be required to ensure the "MAX. ON CENTER" dimension are not exceeded.
3. Concrete anchor table:

| ANCHOR TYPE | ANCHOR SIZE | MIN. EMBEDMENT | MIN. CLEARANCE TO MASONRY EDGE | MIN. CLEARANCE TO ADJACENT ANCHOR |
|-------------|-------------|----------------|--------------------------------|-----------------------------------|
| ITW         | 1/4"        | 1-1/4"         | 2-1/2"                         | 4"                                |
| ELCO        | 1/4"        | 1-1/4"         | 1"                             | 4"                                |

Documents Prepared By:

**RW** BUILDING CONSULTANTS, INC.  
P.O. Box 230 Valrico FL, 33595  
Phone No.: 813.659.9197  
Florida Board of Professional Engineers  
Certificate of Authorization No. 9813  
*LF* *8-25-14*  
Lyndon F. Schmidt, P.E. No. 43409

PRODUCT: 5400/5400S/7000/9900 SERIES SLIDING PATIO DOORS

PART OR ASSEMBLY: BUCK & FRAME ANCHORING

| NO. | DATE     | REVISIONS                       |
|-----|----------|---------------------------------|
| 3   | 8/14/14  | REVISED GLAZING & SERIES NO. JK |
| 2   | 7/7/14   | ADDED FRAME SIZE & DETAILS LFS  |
| 1   | 10/29/13 | ADD SIZE JK                     |

DATE: 4/02/13

SCALE: N.T.S.

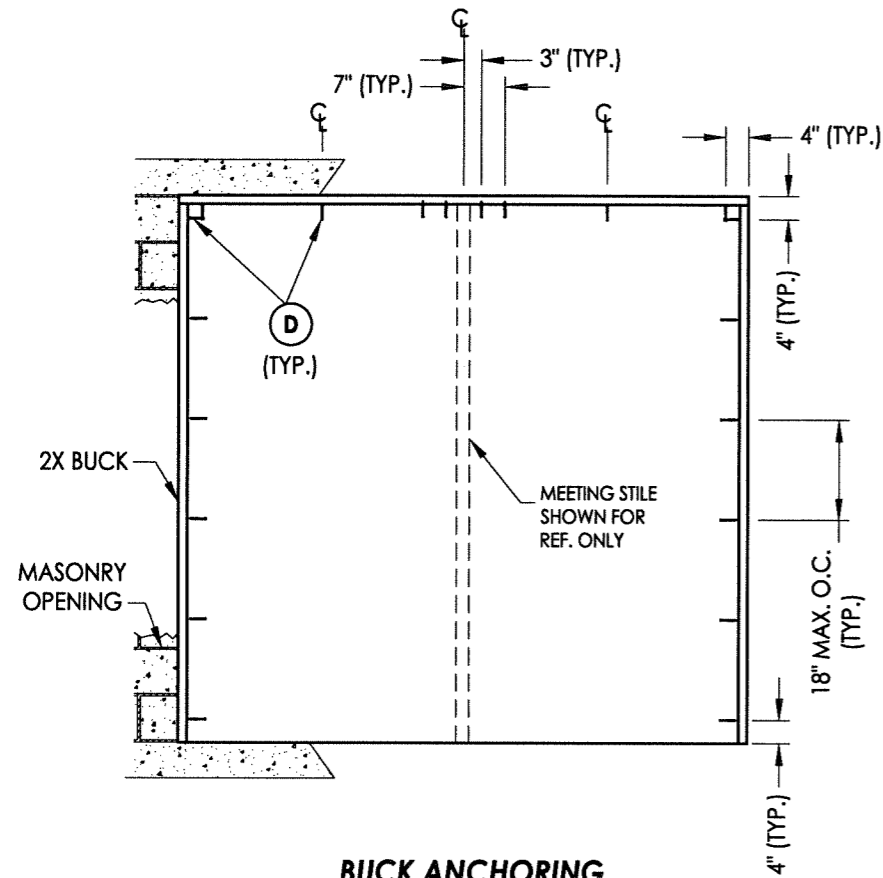
DWG. BY: JK

CHK. BY: LFS

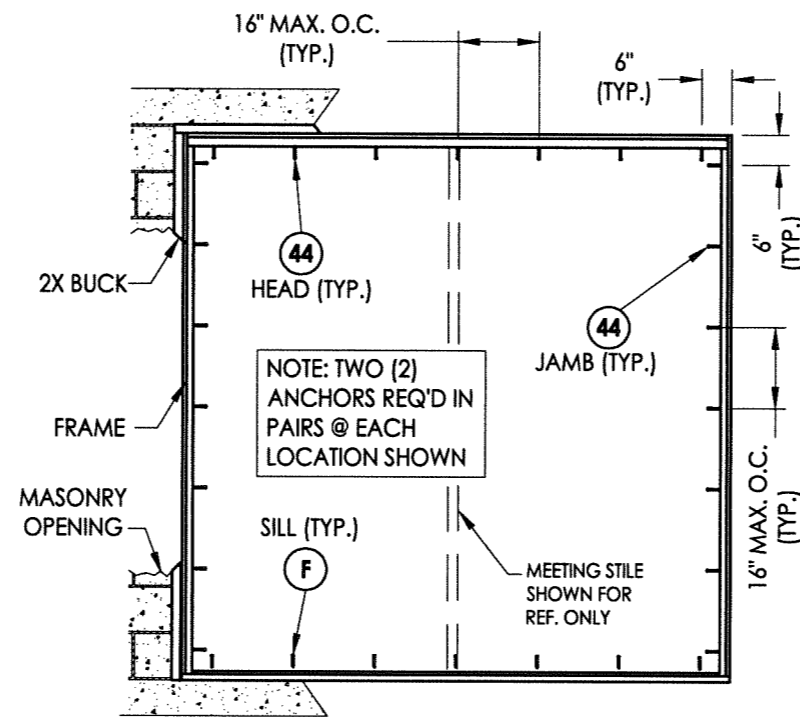
DRAWING NO.:

FL-16216.4

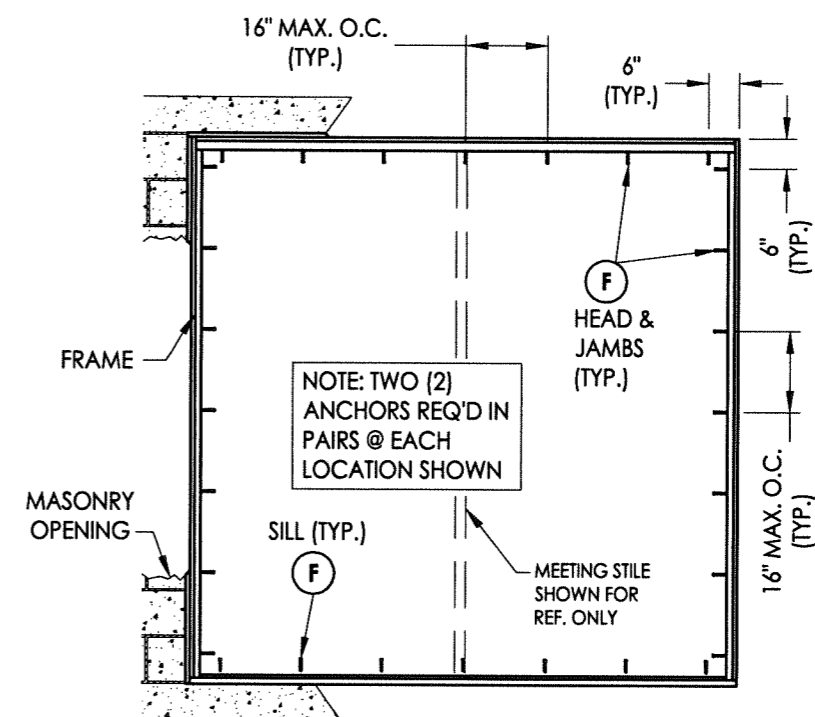
SHEET 6 OF 9



**BUCK ANCHORING  
MASONRY**



**FRAME ANCHORING  
2X Buck**



**FRAME ANCHORING  
1X Buck, Direct to Masonry**

**ANCHORING UP TO 96.1" X 96.1" FRAME SIZE**

**CONCRETE ANCHOR NOTES:**

1. Substitution of equal concrete anchors from a different supplier may have different edge distance and center distance requirements.
2. Concrete anchor locations at the corners may be adjusted to maintain the min. edge distance to mortar joints. Concrete anchor locations noted as "MAX. ON CENTER" must be adjusted to maintain the min. edge distance to mortar joints, additional concrete anchors may be required to ensure the "MAX. ON CENTER" dimension are not exceeded.
3. Concrete anchor table:

| ANCHOR TYPE | ANCHOR SIZE | MIN. EMBEDMENT | MIN. CLEARANCE TO MASONRY EDGE | MIN. CLEARANCE TO ADJACENT ANCHOR |
|-------------|-------------|----------------|--------------------------------|-----------------------------------|
| ITW         | 1/4"        | 1-1/4"         | 2-1/2"                         | 4"                                |
| ELCO        | 1/4"        | 1-1/4"         | 1"                             | 4"                                |

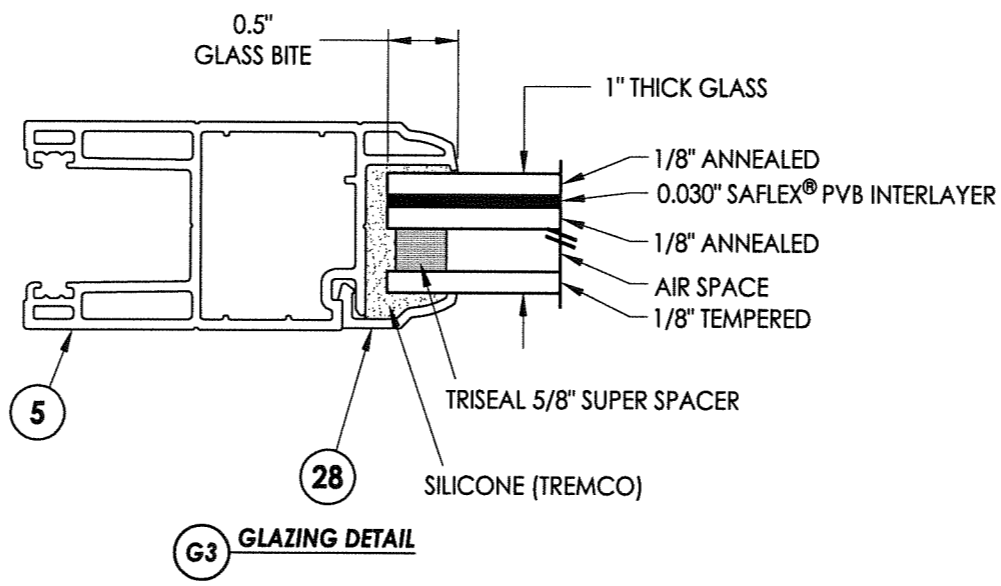
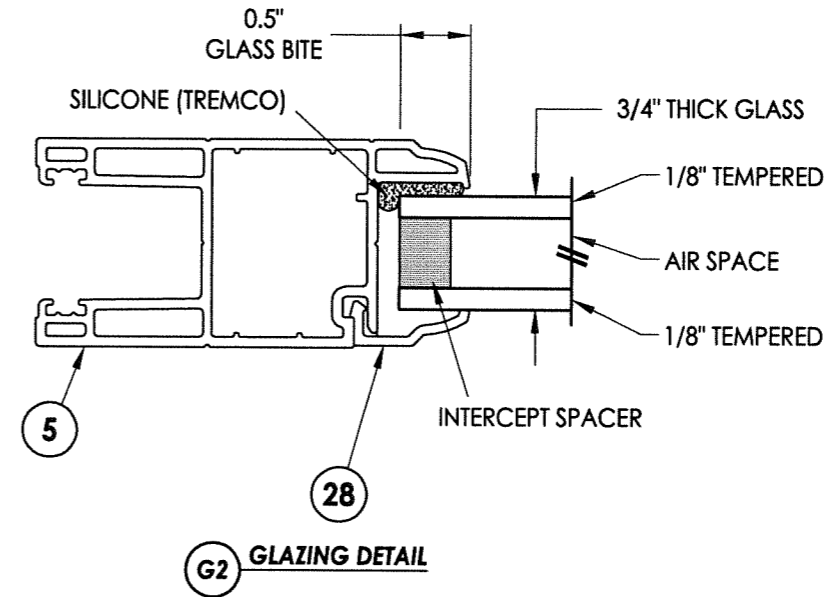
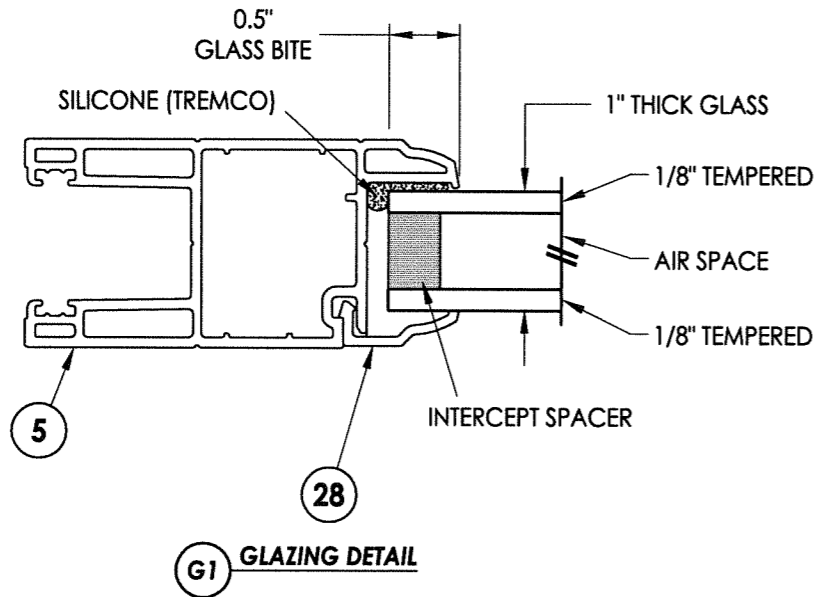
Documents Prepared By:  
**RW** BUILDING CONSULTANTS, INC.  
 P.O. Box 230 Valrico FL 33595  
 Phone No.: 813.659.9197  
 Florida Board of Professional Engineers  
 Certificate Of Authorization No. 9813  
 Lyndon F. Schmidt, P.E. No. 43409

PRODUCT: 5400/5400S/7000/9900 SERIES SLIDING PATIO DOORS  
 PART OR ASSEMBLY: BUCK & FRAME ANCHORING

| NO. | DATE     | REVISIONS                    |
|-----|----------|------------------------------|
| 3   | 8/14/14  | REVISED GLAZING & SERIES NO. |
| 2   | 7/7/14   | ADDED FRAME SIZE & DETAILS   |
| 1   | 10/29/13 | ADD SIZE                     |

DATE: 4/02/13  
 SCALE: N.T.S.  
 DWG. BY: JK  
 CHK. BY: LFS  
 DRAWING NO.: FL-16216.4  
 SHEET 7 OF 9

© 2013 R.W. BUILDING CONSULTANTS INC.



DATE: 4/02/13  
 SCALE: N.T.S.  
 DWG. BY: JK  
 CHK. BY: LFS  
 DRAWING NO.: FL-16216.4  
 SHEET 8 OF 9

| NO. | DATE     | REVISIONS                    |
|-----|----------|------------------------------|
| 3   | 8/14/14  | REVISED GLAZING & SERIES NO. |
| 2   | 7/7/14   | ADDED FRAME SIZE & DETAILS   |
| 1   | 10/29/13 | ADD SIZE                     |
|     |          |                              |
|     |          |                              |

PRODUCT: 5400/5400S/7000/9900 SERIES SLIDING PATIO DOORS  
 PART OR ASSEMBLY: GLAZING DETAILS

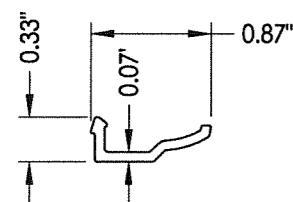
Documents Prepared By:  
**RW** BUILDING CONSULTANTS, INC.  
 P.O. Box 230 Vairico FL 33595  
 Phone No.: 813.659.9197  
 Florida Board of Professional Engineers  
 Certificate Of Authorization No. 9813  
 Lyndon F. Schmidt, P.E. No. 43409



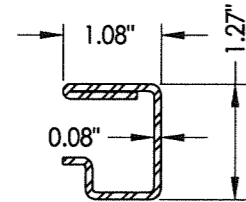
| BILL OF MATERIALS |  |          |
|-------------------|--|----------|
| ITEM #            | DESCRIPTION  | MATERIAL |
| A                 | 1X BUCK SG >= 0.55   | WOOD     |
| B                 | 2X BUCK SG >= 0.55   | WOOD     |
| C                 | 1/4" MAX. SHIM SPACE   | -        |
| D                 | 1/4" X 2-3/4" ELCO OR ITW CONCRETE SCREW   | STEEL    |
| E                 | MASONRY - 3,192 PSI MIN. CONCRETE CONFORMING TO ACI 301 OR HOLLOW BLOCK CONFORMING TO ASTM C90 | CONCRETE |
| F                 | 1/4" ELCO OR ITW CONCRETE SCREW (1-1/4" MIN. EMBEDMENT REQ'D. INTO CONCRETE)                   | STEEL    |
| 1                 | FRAME HEAD*  | PVC      |
| 2                 | #8 x 2-3/4" FH QUADREX WOOD SCREW  | STEEL    |
| 3                 | WEATHERSTRIP (SCHLEGEL #HF-7522-270)   | -        |
| 4                 | HEAD TRACK*  | PVC      |
| 5                 | STILE & RAIL*  | PVC      |
| 6                 | SETTING BLOCK  | -        |
| 7                 | SILICONE (SIKA 552)  | SILICONE |
| 8                 | DURASEAL SPACER SYSTEM   | -        |
| 9                 | SHIM   | -        |
| 10                | TANDEM WHEEL   | NYLON    |
| 11                | ROLLING RAIL   | ALUM     |
| 12                | SILL*  | PVC      |
| 13                | SILL DUST COVER*   | PVC      |
| 14                | SILL PLUG  | NYLON    |
| 15                | SILL WEATHERSEAL   | -        |
| 17                | LEFT CAP FOR SILL ADAPTER*   | PVC      |
| 18                | RIGHT CAP FOR SILL ADAPTER*  | PVC      |
| 19                | #8 X 5/8" PAN HEAD, SQUARE, SELF-DRILLING SCREW  | STEEL    |
| 20                | OUTSIDE SILL CLADDING  | STEEL    |
| 22                | INSECT STOP  | -        |
| 23                | SCREEN   | -        |
| 24                | #8 X 7/8" PAN HEAD, QUADREX, SCREW   | STEEL    |
| 25                | FIXED PANEL ANCHOR BLOCK*  | PVC      |
| 27                | SCREW CAP  | NYLON    |
| 28                | GLAZING BEAD*  | PVC      |

|    |  |       |
|----|--|-------|
| 29 | FOAM PLUG  | -     |
| 30 | HEAD WEATHERSEAL   | -     |
| 31 | #8 X 1-1/4" PAN HEAD, QUADREX, SCREW                       | STEEL |
| 32 | SASH STOPPER   | EPDM  |
| 33 | WEATHERSTRIP   | -     |
| 34 | FRAME JAMB*  | PVC   |
| 35 | WEATHERSTRIP   | -     |
| 39 | HANDLE KIT   | STEEL |
| 42 | KEEPER FOR SCREEN  | -     |
| 43 | #4 X 5/8" PAN HEAD QUADREX SCREW                           | STEEL |
| 44 | #10 PPH WOOD SCREW (1-3/8" MIN. EMBEDMENT REQ'D INTO WOOD) | STEEL |
| 46 | STAINLESS STEEL DOUBLE POINT MORTISE LOCK KIT              | STEEL |
| 47 | SASH COVERING CAP*   | PVC   |
| 48 | LOCK PLUG*   | PVC   |
| 50 | STILE REINFORCEMENT  | STEEL |
| 51 | #8 X 2" TRUSS HEAD QUADREX SCREW                           | STEEL |
| 52 | INTERLOCK*   | PVC   |
| 53 | STILE REINFORCEMENT  | STEEL |
| 54 | Q-LON WEATHERSTRIP (SCHLEGEL NO. QEZ 345)                  | -     |

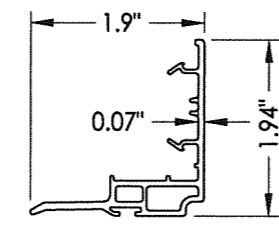
\* THE APPROVED WHITE RIGID PVC EXTERIOR EXTRUSIONS FOR WINDOWS ARE TO BE PRODUCED BY EXTRUDERS LICENSEES IN "AAMA CERTIFICATION PROGRAMS FOR RIGID PVC EXTRUSIONS".



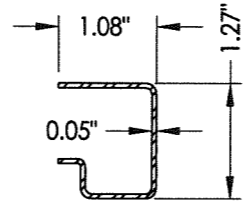
28 GLAZING BEAD



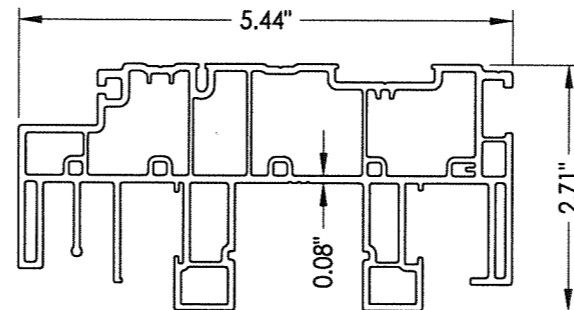
50 REINFORCEMENT Stile



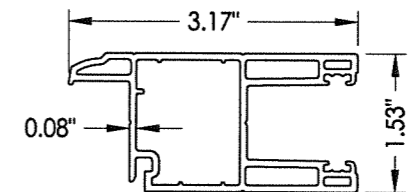
52 INTERLOCK



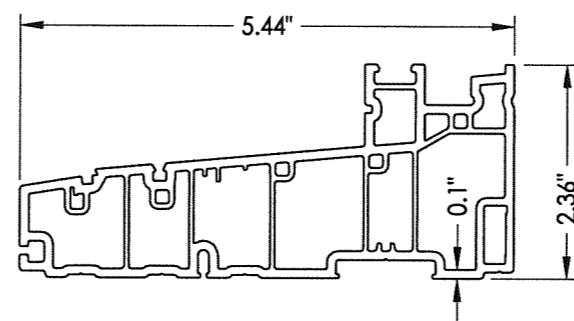
53 REINFORCEMENT Stile



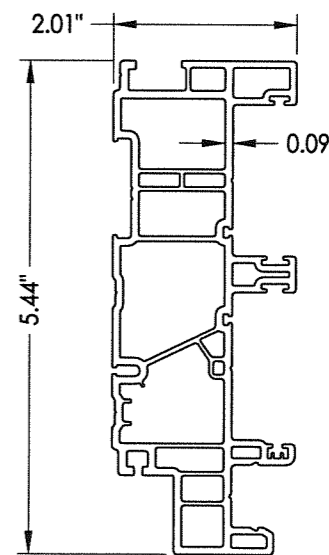
1 FRAME HEAD



5 STILE, RAIL



12 FRAME SILL



34 FRAME JAMB

PRODUCT: 5400/5400S/7000/9900 SERIES SLIDING PATIO DOORS  
 PART OR ASSEMBLY: BILL OF MATERIALS & COMPONENTS

| NO. | DATE     | REVISIONS                    |
|-----|----------|------------------------------|
| 3   | 8/14/14  | REVISED GLAZING & SERIES NO. |
| 2   | 7/7/14   | ADDED FRAME SIZE & DETAILS   |
| 1   | 10/29/13 | ADD SIZE                     |
|     |          |                              |
|     |          |                              |

DATE: 4/02/13  
 SCALE: N.T.S.  
 DWG. BY: JK  
 CHK. BY: LFS  
 DRAWING NO.: FL-16216.4  
 SHEET 9 OF 9

Documents Prepared By: R.W. BUILDING CONSULTANTS, INC.  
 P.O. Box 230 Valrico FL 33595  
 Phone No.: 813.659.9197  
 Florida Board of Professional Engineers  
 Certificate of Authorization No. 9813  
 Lyndon F. Schmidt, P.E. No. 43409