

# WINCORE<sup>TM</sup>

## WINDOWS & DOORS

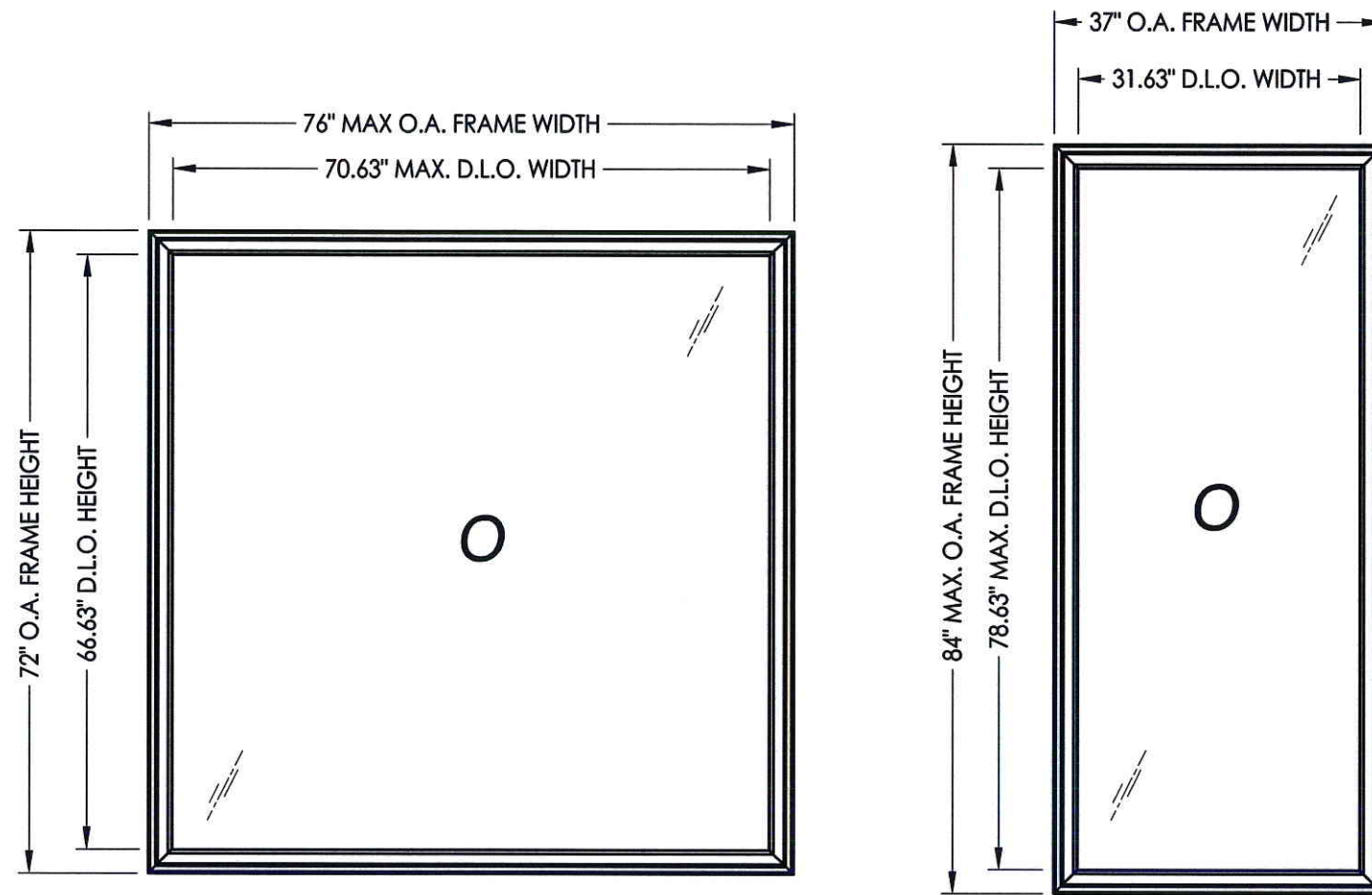
250 Staunton Turnpike, Parkersburg, WV 26104

### 8800 Series Vinyl Fixed Window "IMPACT"

#### GENERAL NOTES

- This product has been evaluated and is in compliance with the 2010 Florida Building Code (FBC) structural requirements excluding the "High Velocity Hurricane Zone" (HVHZ).
- Product anchors shall be as listed and spaced as shown on details. Anchor embedment to base material shall be beyond wall dressing or stucco.
- When used in areas requiring wind borne debris protection this product complies with Section 1609.1.2 of the FBC and does not require an impact resistant covering. This product meets missile level "D" and includes Wind Zone 4 as defined in ASTM E1996 and Section 1609.1.2.4 of the FBC.
- For 2x stud framing construction, anchoring of these units shall be the same as that shown for 2x buck masonry construction.
- Site conditions that deviate from the details of this drawing require further engineering analysis by a licensed engineer or registered architect.

TABLE OF CONTENTS	
SHEET#	DESCRIPTION
1	Typical elevations, design pressures and general notes
2	Horizontal cross sections
3	Buck anchoring
4	Frame anchoring
5	Bill of materials, components and glazing details



MAX. FRAME DIMENSION	MAX. D.L.O. DIMENSION	GLASS TYPE	DESIGN PRESSURE (PSF)	
			POSITIVE	NEGATIVE
37.0" X 84.0"	31.63" X 78.63"	G1	+65.0	-65.0
		G5	+50.0	-50.0
48.0" X 60.0"	42.63" X 54.63"	G2, G5	+50.0	-50.0
64.0" X 64.0"	58.63" X 58.63"	G1	+65.0	-65.0
		G6	+50.0	-50.0
72.0" X 72.0"	66.63" X 66.63"	G3	+65.0	-65.0
		G4	+50.0	-50.0
76.0" X 63.0"	70.63" X 57.63"	G3	+65.0	-70.0

NOTE: Maximum frame width and height occur on separate units.

Documents Prepared By:

*RW*  
BUILDING CONSULTANTS, INC.  
P.O. Box 230 Valrico FL 33595  
Phone No.: 813.659.9197

Florida Board of Professional Engineers  
Certificate Of Authorization No. 9813

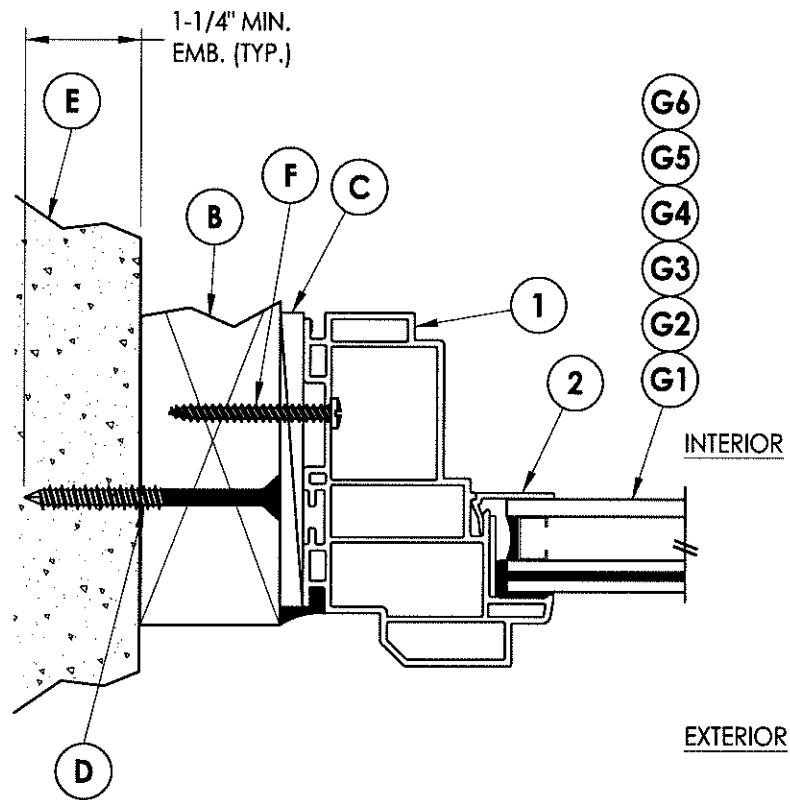
*LFS*  
Lyndon F. Schmidt, P.E. No. 43409

PRODUCT: 8800 SERIES VINYL FIXED WINDOW  
PART OR ASSEMBLY: TYPICAL ELEVATION, DESIGN PRESSURES & GENERAL NOTES

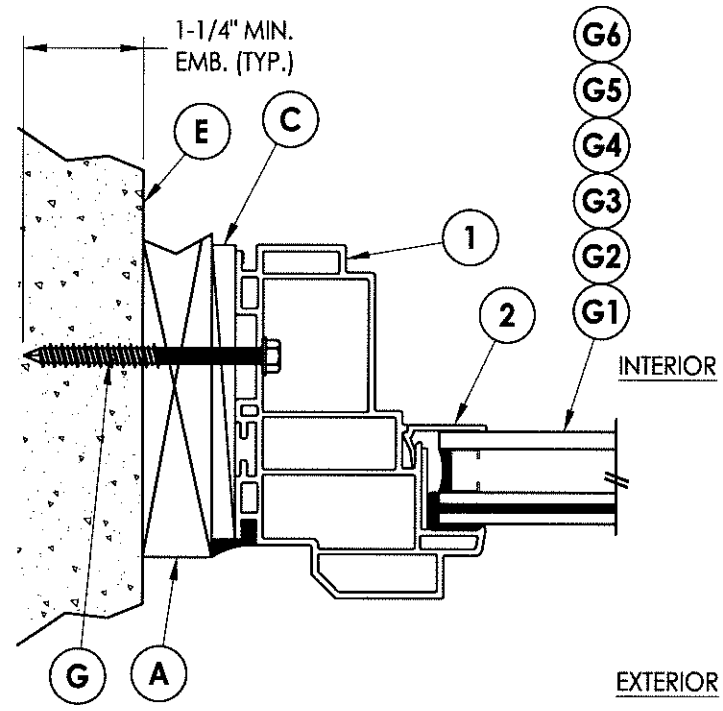
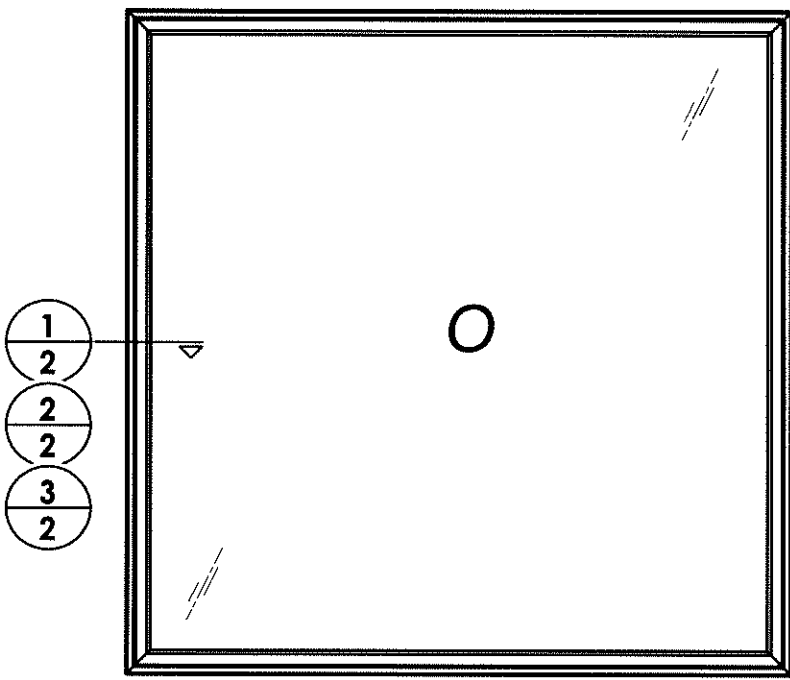
NO.	DATE	REVISIONS
2	4/02/13	ADDED NEW FRAME SIZE
1	1/17/13	ADD GLAZING DETAILS

DATE: 8/2/12  
SCALE: N.T.S.  
DWG. BY: JK  
CHK. BY: LFS  
DRAWING NO.: FL-15816.2  
SHEET 1 OF 5

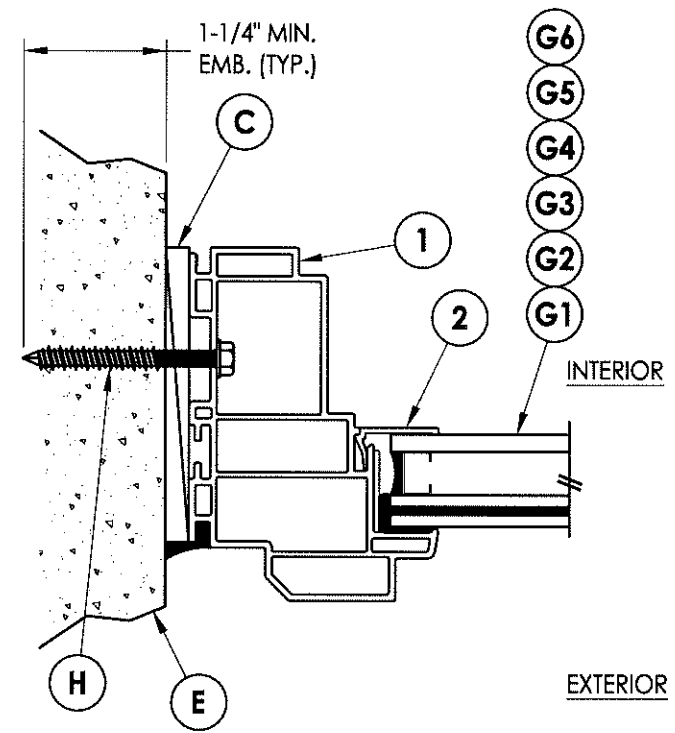
\\sbs2k3\RWBC\VA - Projects\Project Folders\Proj 1601 - 1700\PF 1680\D. RWBC Drawings\Picture Window\FL-15816.dwg, 2.2



**1 HORIZONTAL CROSS SECTION**  
**2** Shown w/ 2X buck

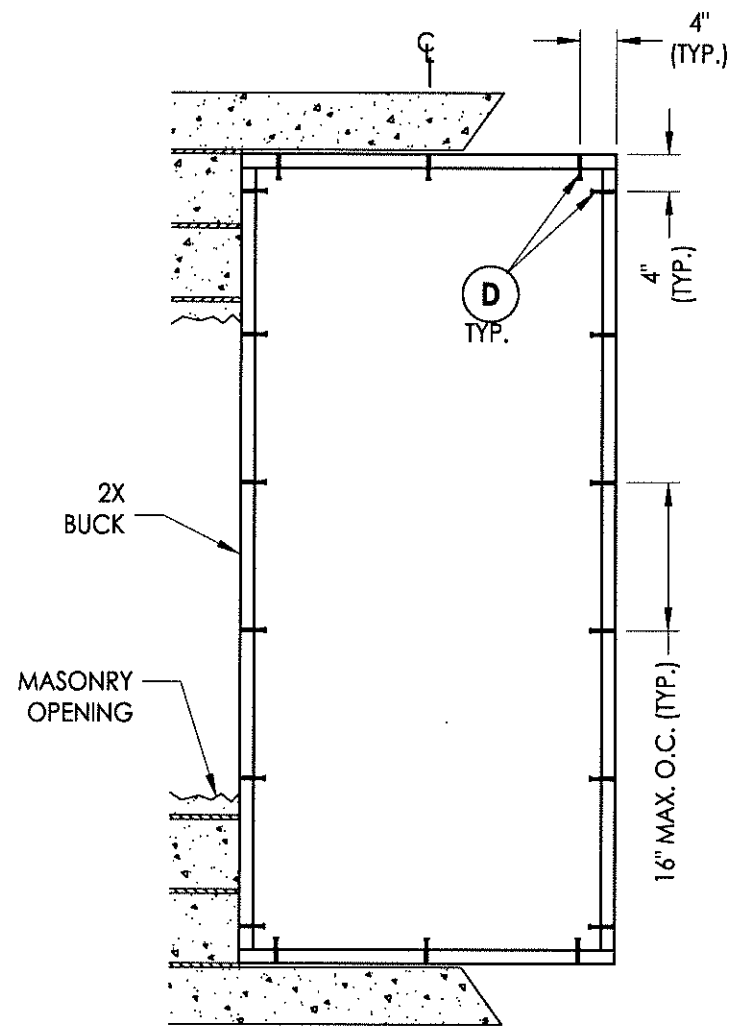


**2 HORIZONTAL CROSS SECTION**  
**2** Shown w/ 1X buck

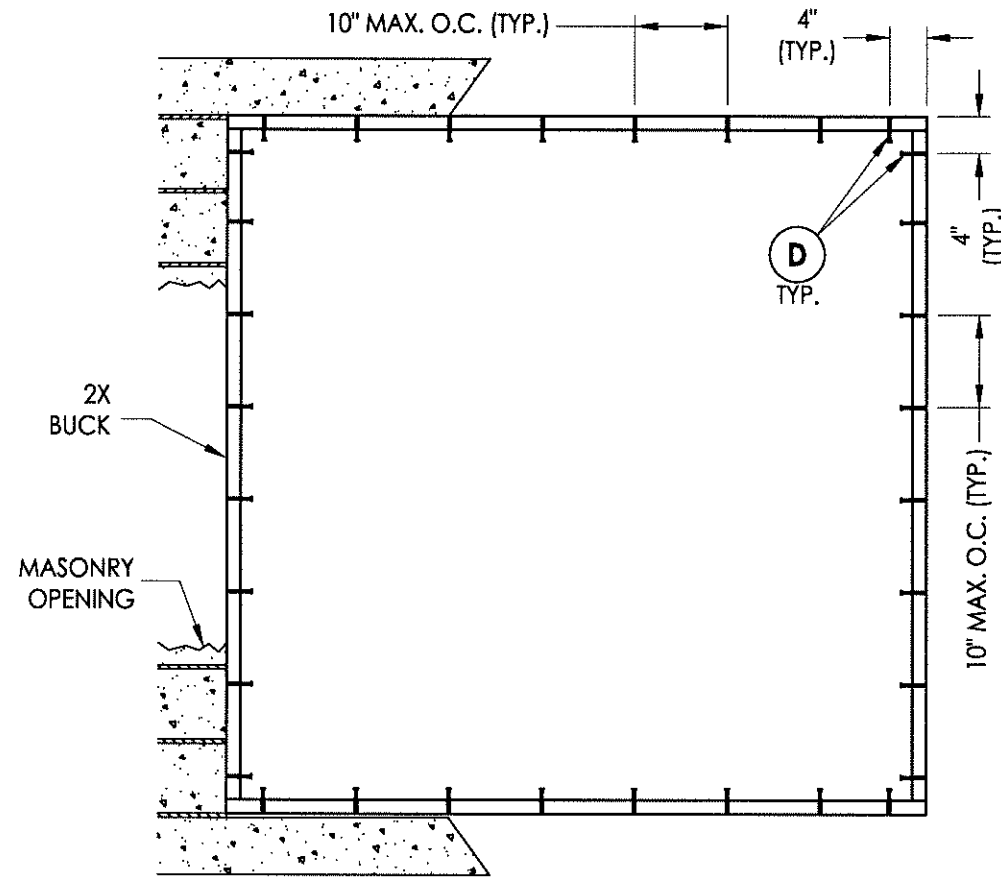


**3 HORIZONTAL CROSS SECTION**  
**2** Shown direct to masonry

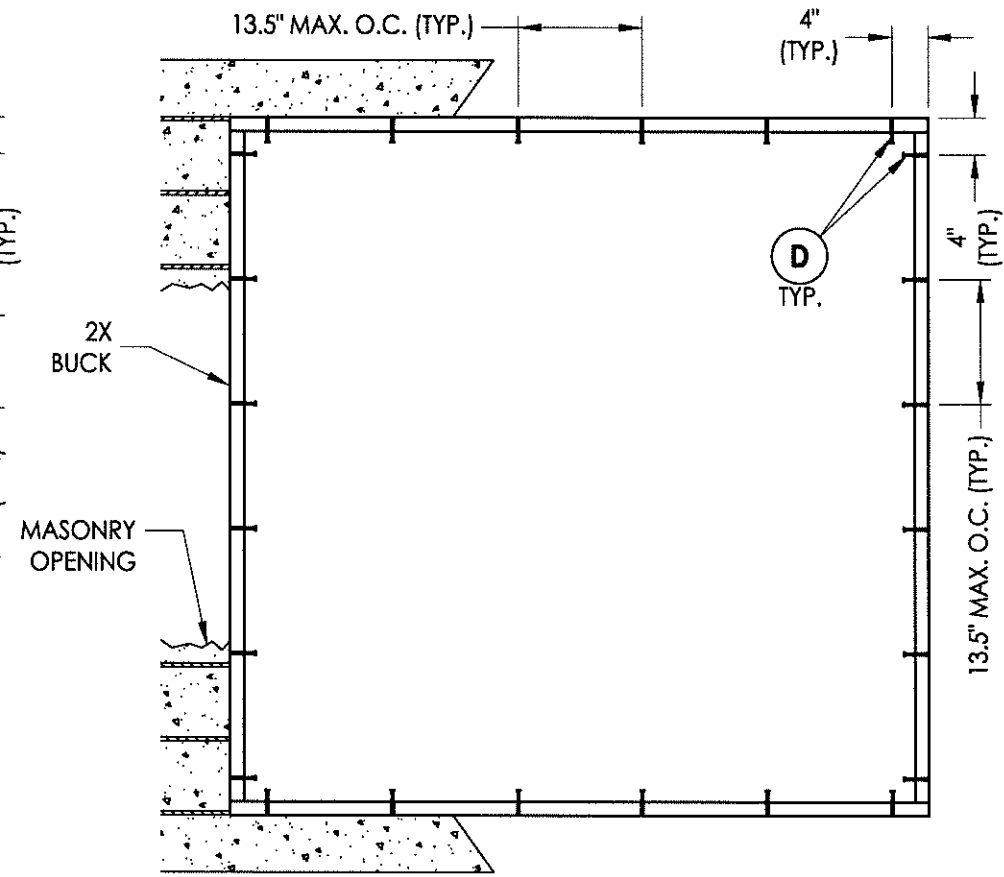
Documents Prepared By: <b>RW</b> BUILDING CONSULTANTS, INC. P.O. Box 230 Valrico FL 33595 Phone No.: 813.659.9197 Florida Board of Professional Engineers Certificate Of Authorization No. 9813 <i>LFS</i> Lyndon F. Schmidt, P.E. No. 43409	
PRODUCT: <b>8800 SERIES VINYL FIXED WINDOW</b>	PART OR ASSEMBLY: <b>HORIZONTAL CROSS SECTIONS</b>
NO. DATE 2 4/02/13 1 1/17/13	REVISIONS LFS JK BY
DATE: 8/2/12 SCALE: N.T.S. DWG. BY: JK CHK. BY: LFS DRAWING NO.: FL-15816.2 SHEET 2 OF 5	© 2012 R.W. BUILDING CONSULTANTS INC.



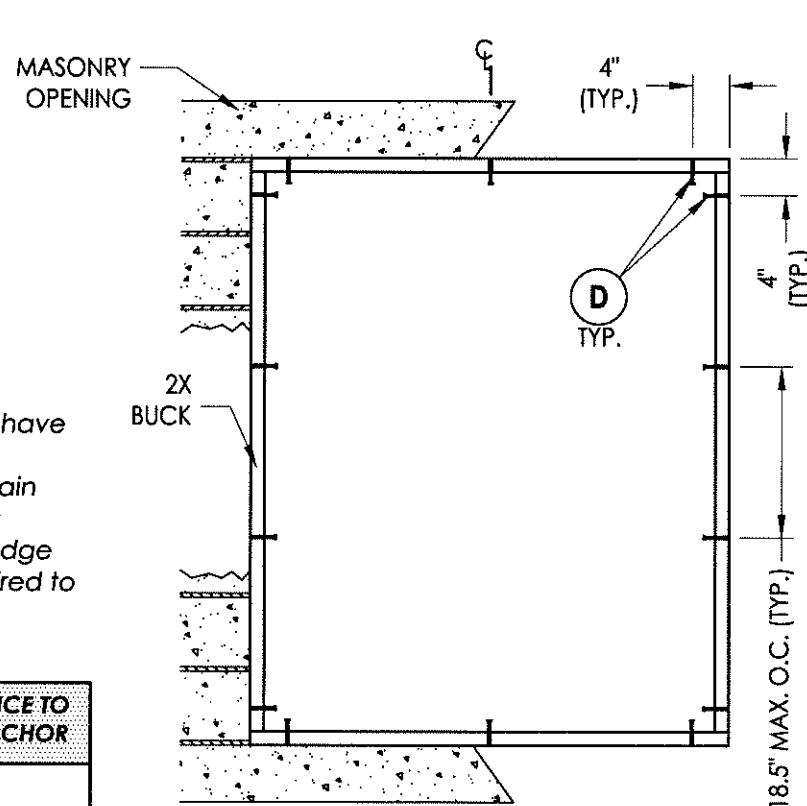
**BUCK ANCHORING**  
37" X 84" MAX  
DP ≤ 65 PSF



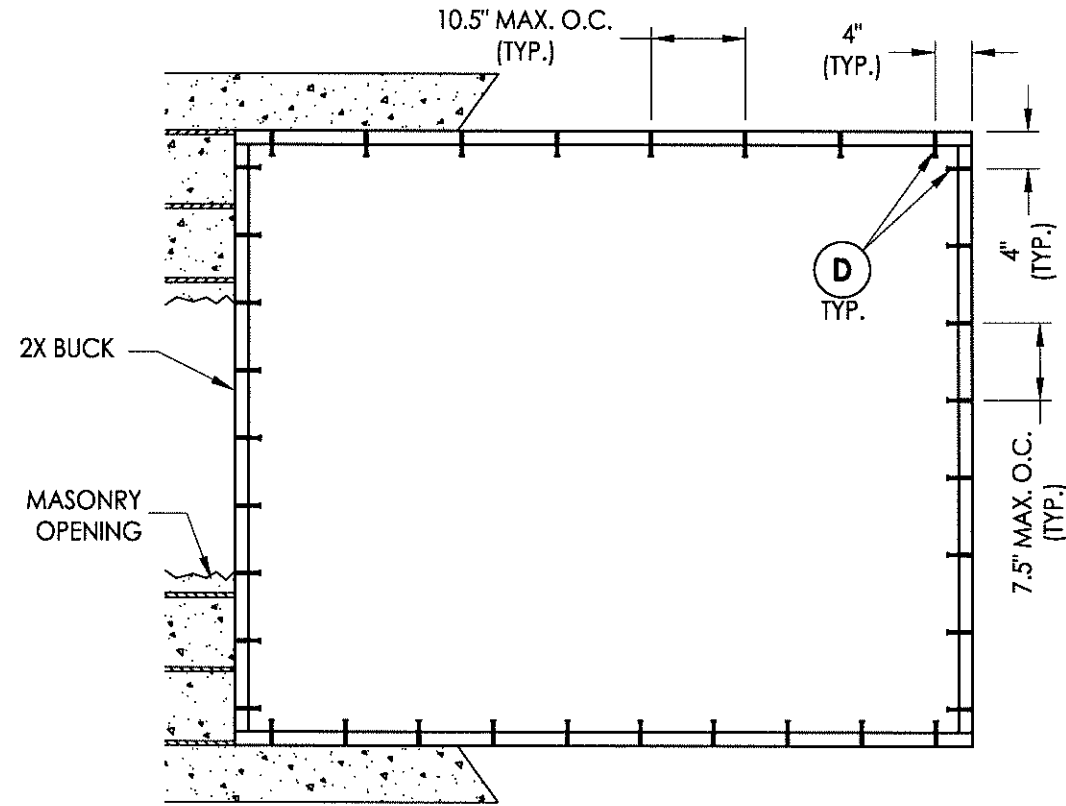
**BUCK ANCHORING**  
72" X 72" MAX  
DP ≤ 65 PSF



**BUCK ANCHORING**  
72" X 72" MAX  
DP ≤ 50 PSF



**BUCK ANCHORING**  
48" X 60" MAX  
DP ≤ 50 PSF



**BUCK ANCHORING**  
76" X 63" MAX  
DP ≤ 70 PSF

**CONCRETE ANCHOR NOTES:**

1. Substitution of equal concrete anchors from a different supplier may have different edge distance and center distance requirements.
2. Concrete anchor locations at the corners may be adjusted to maintain the min. edge distance to mortar joints. If concrete anchor locations noted as "MAX. ON CENTER" must be adjusted to maintain the min. edge distance to mortar joints, additional concrete anchors may be required to ensure the "MAX. ON CENTER" dimensions are not exceeded.
3. Concrete anchor table:

ANCHOR TYPE	ANCHOR SIZE	MIN. EMBEDMENT	MIN. CLEARANCE TO MASONRY EDGE	MIN. CLEARANCE TO ADJACENT ANCHOR
ITW	1/4"	1-1/4"	2-1/2"	3"
ELCO	1/4"	1-1/4"	1"	4"

Documents Prepared By:

**RW** BUILDING CONSULTANTS, INC.  
P.O. Box 230 Valrico FL 33595  
Phone No.: 813.659.9197  
Florida Board of Professional Engineers  
Certificate Of Authorization No. 9813  
**L7-PK-52-13**  
Lyndon F. Schmidt, P.E. No. 43409

PRODUCT: 8800 SERIES VINYL FIXED WINDOW

PART OR ASSEMBLY: BUCK ANCHORING

NO.	DATE	REVISIONS
2	4/02/13	ADDED NEW FRAME SIZE
1	1/17/13	ADD GLAZING DETAILS
LFS		
JK		
BY		

DATE: 8/2/12

SCALE: N.T.S.

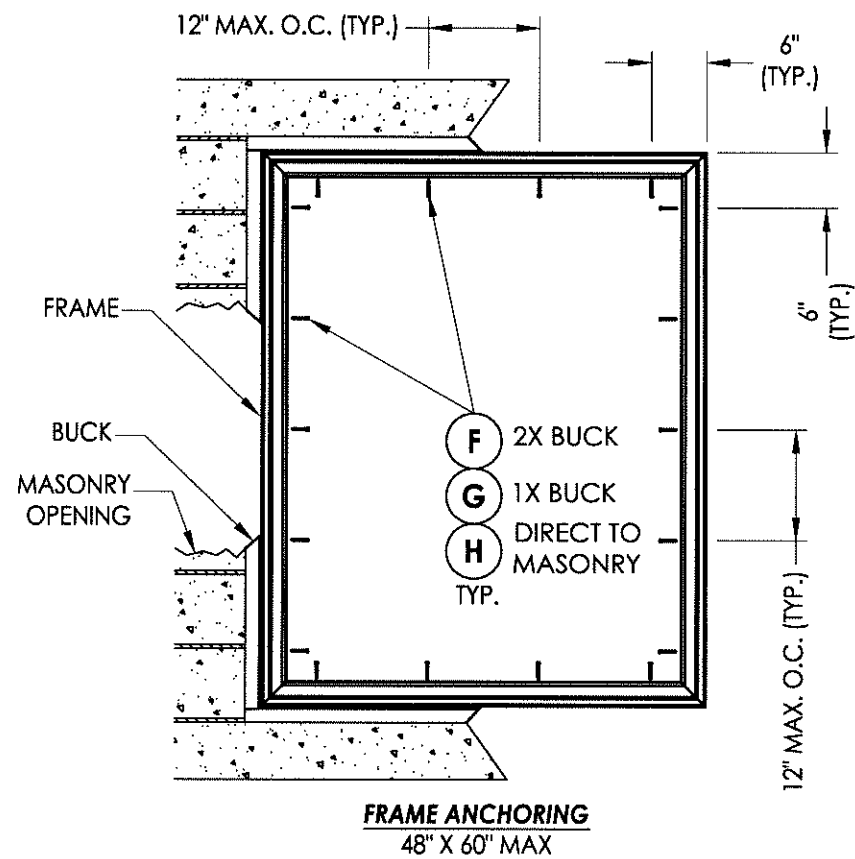
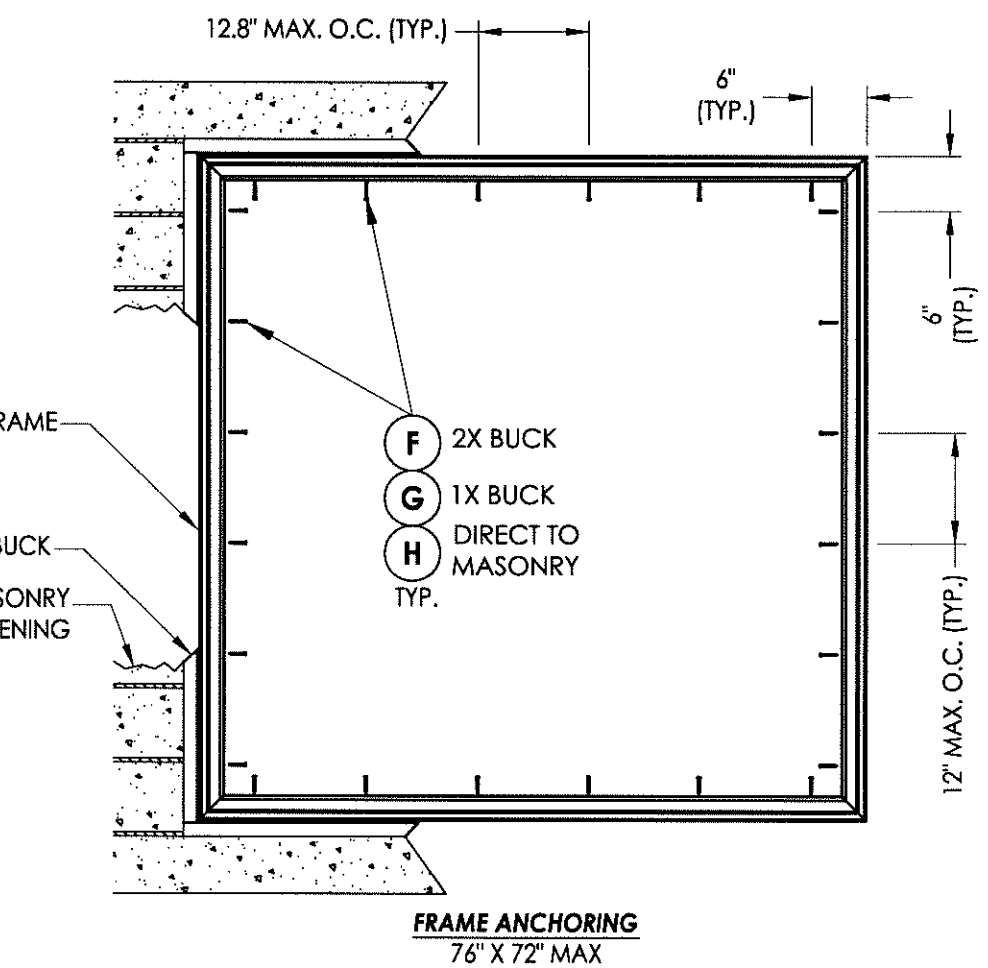
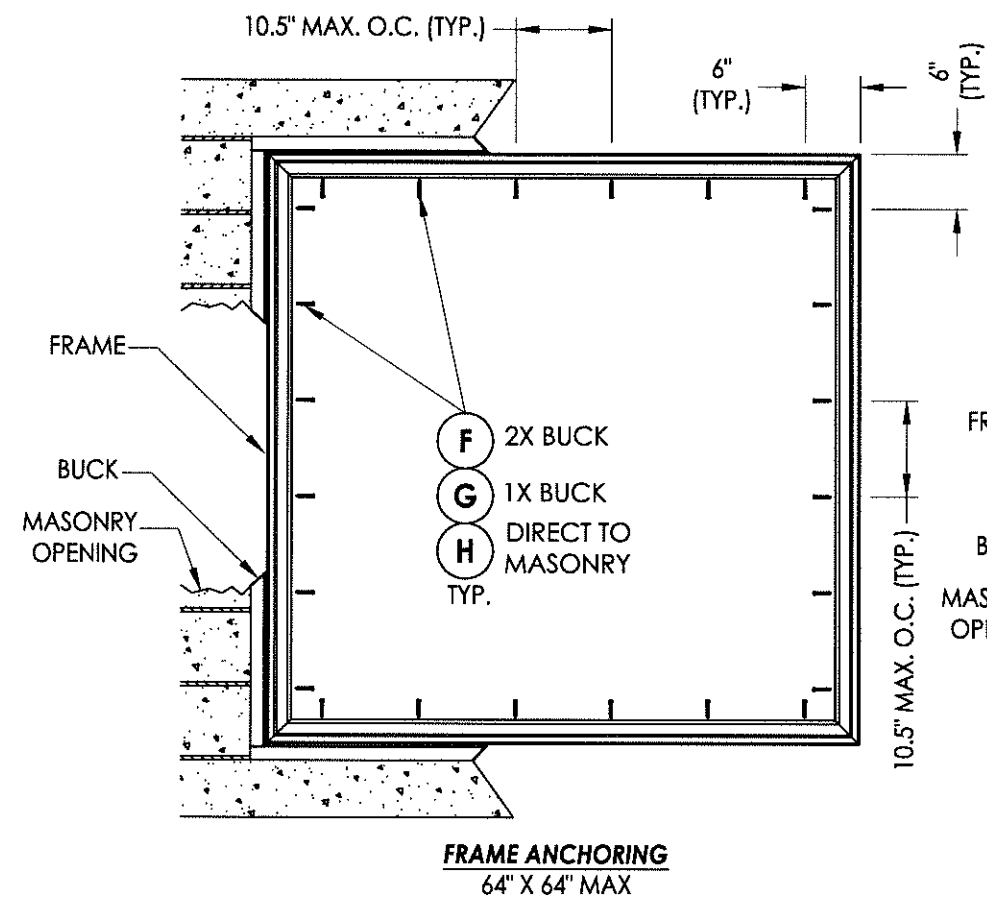
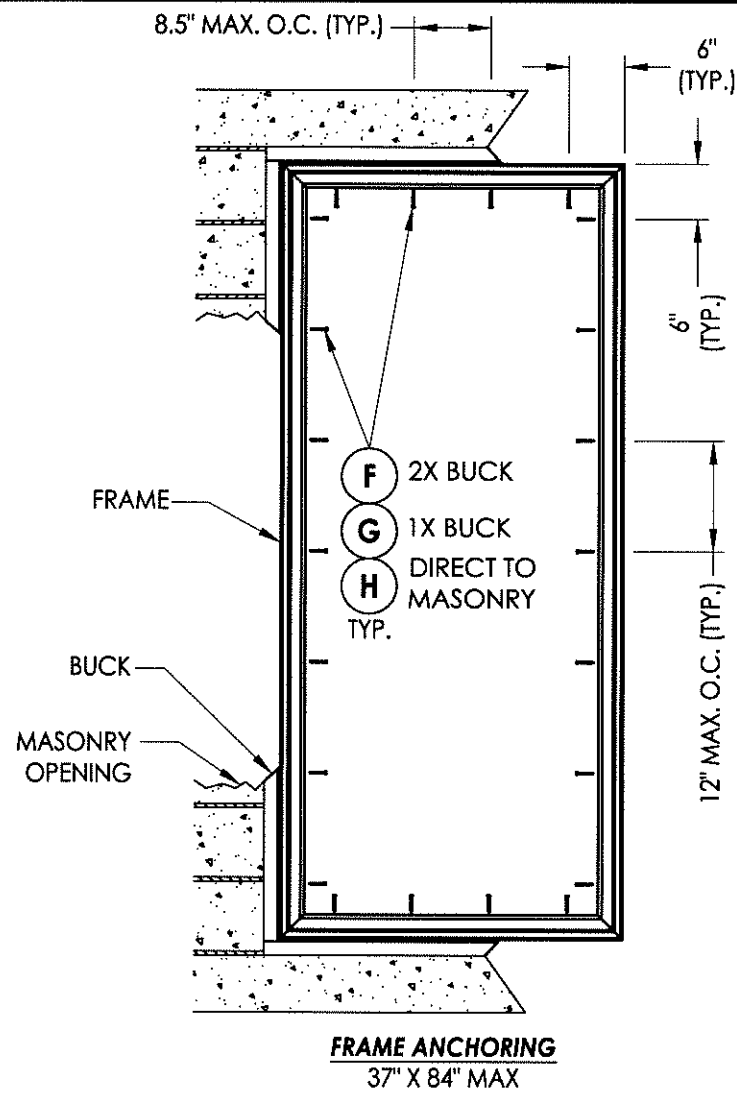
DWG. BY: JK

CHK. BY: LFS

DRAWING NO.: FL-15816.2

SHEET 3 OF 5





**CONCRETE ANCHOR NOTES:**

1. Substitution of equal concrete anchors from a different supplier may have different edge distance and center distance requirements.
2. Concrete anchor locations at the corners may be adjusted to maintain the min. edge distance to mortar joints. If concrete anchor locations noted as "MAX. ON CENTER" must be adjusted to maintain the min. edge distance to mortar joints, additional concrete anchors may be required to ensure the "MAX. ON CENTER" dimensions are not exceeded.
3. Concrete anchor table:

ANCHOR TYPE	ANCHOR SIZE	MIN. EMBEDMENT	MIN. CLEARANCE TO MASONRY EDGE	MIN. CLEARANCE TO ADJACENT ANCHOR
ITW	1/4"	1-1/4"	2-1/2"	3"
ELCO	1/4"	1-1/4"	1"	4"

Documents Prepared By:  
**RW** BUILDING CONSULTANTS, INC.  
 P.O. Box 230 Vairico FL 33595  
 Phone No.: 813.659.9197  
 Florida Board of Professional Engineers  
 Certificate Of Authorization No. 9813  
*LFS JK*  
 Lyndon F. Schmidt, P.E. No. 43409

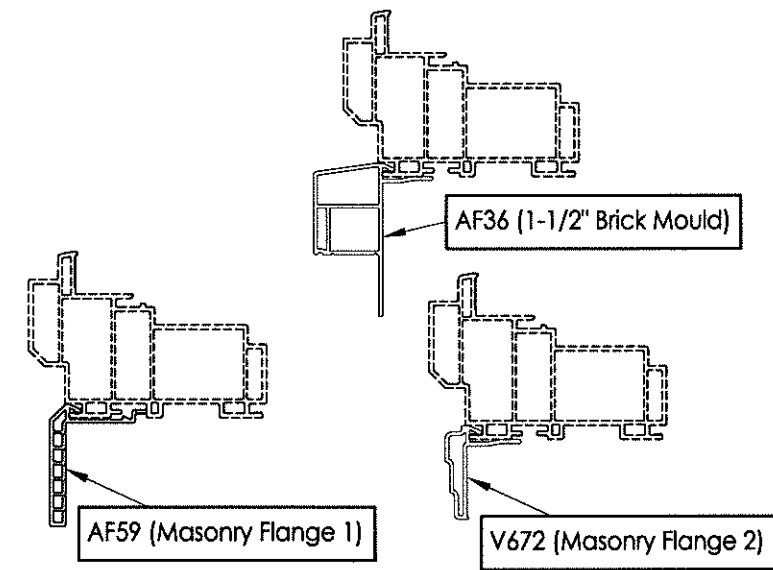
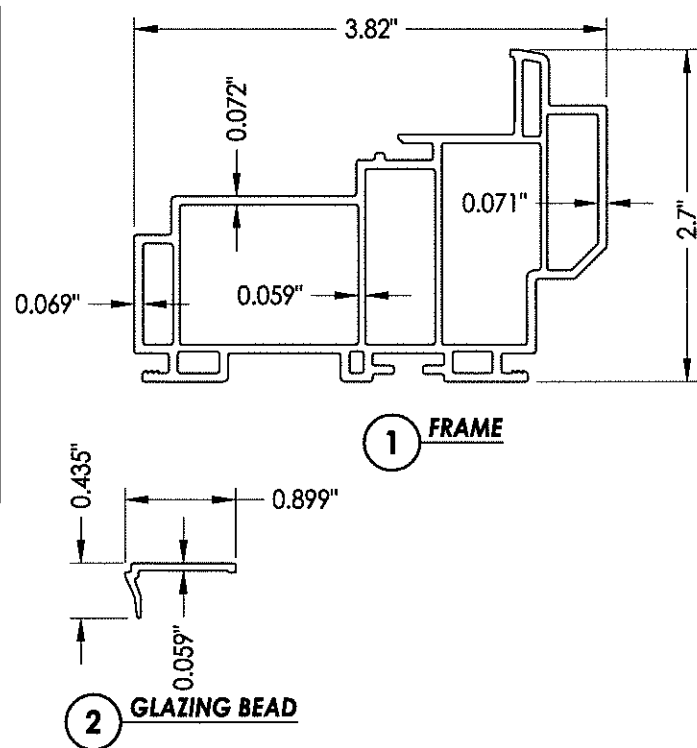
PRODUCT: 8800 SERIES VINYL FIXED WINDOW  
 PART OR ASSEMBLY: FRAME ANCHORING

NO.	DATE	BY	REVISIONS
2	4/02/13	LFS	ADDED NEW FRAME SIZE
1	1/17/13	JK	ADD GLAZING DETAILS

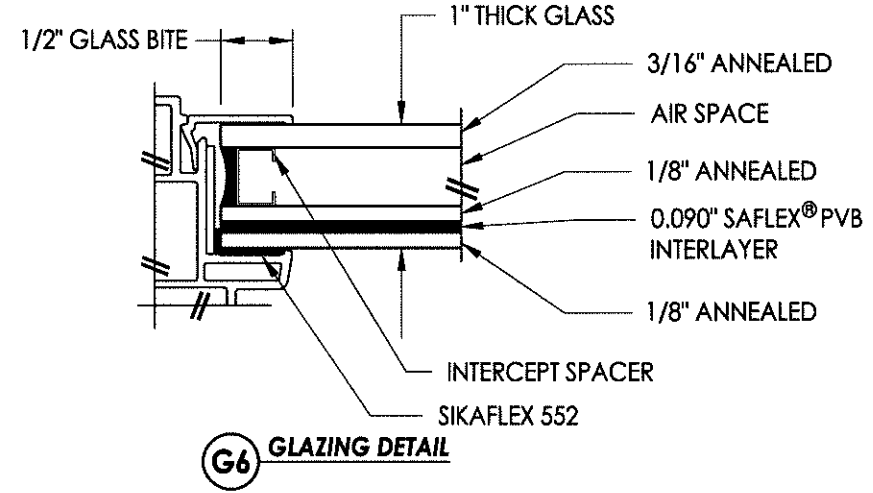
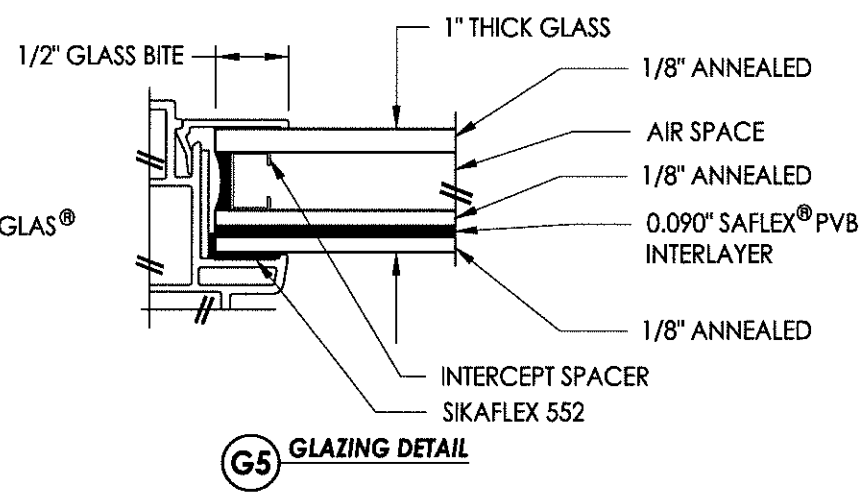
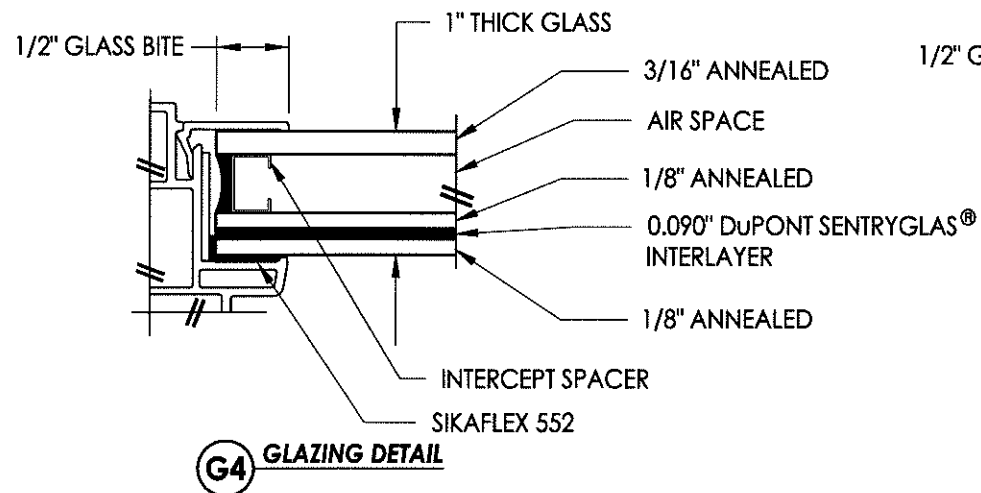
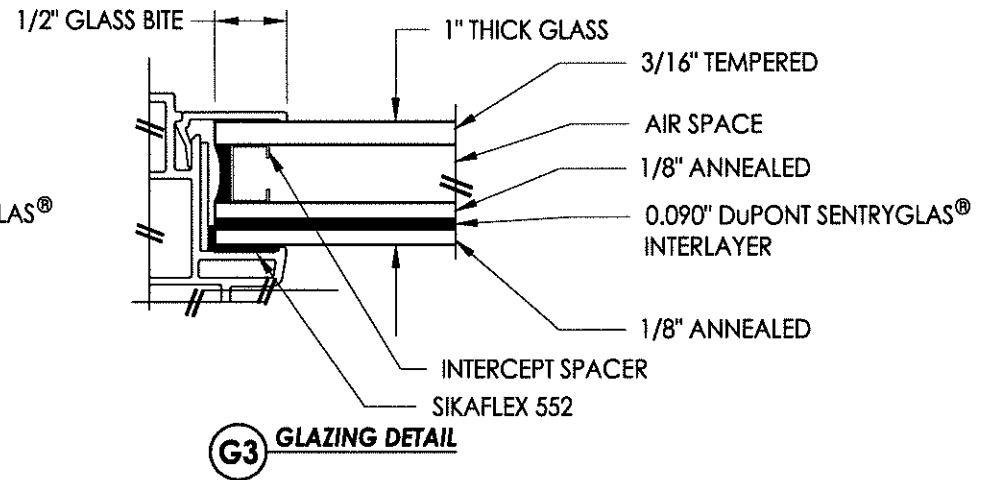
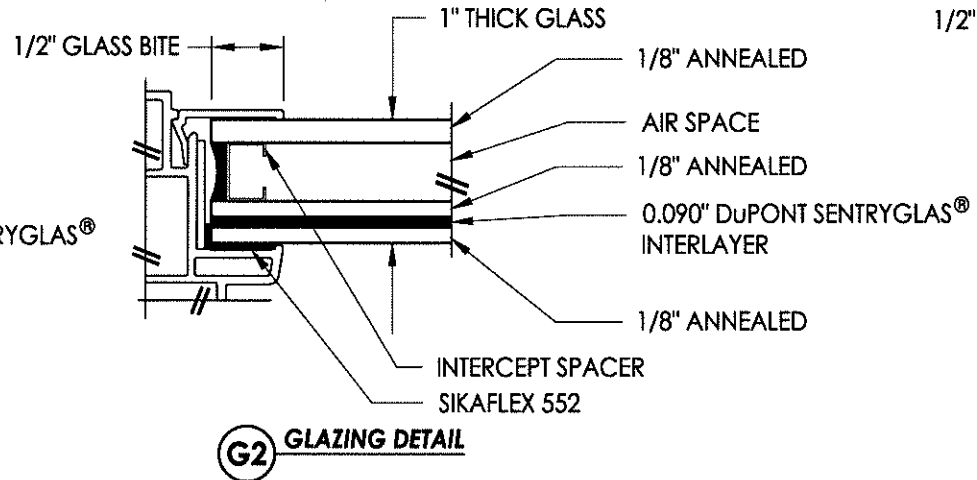
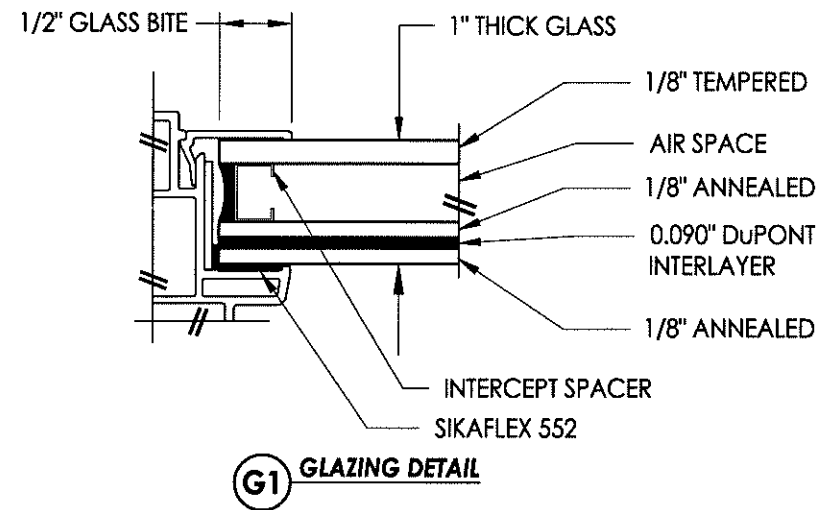
DATE: 8/2/12  
 SCALE: N.T.S.  
 DWG. BY: JK  
 CHK. BY: LFS  
 DRAWING NO.: FL-15816.2  
 SHEET 4 OF 5

BILL OF MATERIALS		
ITEM #	DESCRIPTION	MATERIAL
A	1X BUCK SG >= 0.42	WOOD
B	2X BUCK SG >= 0.42	WOOD
C	1/4" MAX. SHIM SPACE	-
D	1/4" X 2-3/4" PFH ELCO OR ITW CONCRETE SCREW	STEEL
E	MASONRY - 3,192 PSI MIN. CONCRETE CONFORMING TO ACI 301 OR HOLLOW BLOCK CONFORMING TO ASTM C90	CONCRETE
F	#10 X 1-3/4" PPH WOOD SCREW	STEEL
G	1/4" X 2-3/4" HWH ELCO OR ITW CONCRETE SCREW	STEEL
H	1/4" X 2-1/4" HWH ELCO OR ITW CONCRETE SCREW	STEEL
1	FRAME (PI7701WH)*	PVC
2	1" GLAZING BEAD (BV56WH)*	PVC

\* THE APPROVED WHITE RIGID PVC EXTERIOR EXTRUSIONS FOR WINDOWS ARE TO BE PRODUCED BY EXTRUDERS LICENSEES IN "AAMA CERTIFICATION PROGRAMS FOR RIGID PVC EXTRUSIONS".



**OPTIONAL COSMETIC FLANGES**



Documents Prepared By:  
**RW** BUILDING CONSULTANTS, INC.  
 P.O. Box 230 Valrico FL 33595  
 Phone No.: 813.659.9197  
 Florida Board of Professional Engineers  
 Certificate Of Authorization No. 9813  
 Lyndon F. Schmidt, P.E. No. 43409

PRODUCT: 8800 SERIES VINYL FIXED WINDOW  
 PART OR ASSEMBLY: BILL OF MATERIALS, COMPONENTS AND GLAZING DETAILS

NO.	DATE	BY	REVISIONS
2	4/02/13	JK	ADDED NEW FRAME SIZE
1	1/17/13	JK	ADD GLAZING DETAILS

DATE: 8/2/12  
 SCALE: N.T.S.  
 DWG. BY: JK  
 CHK. BY: LFS  
 DRAWING NO.: FL-15816.2  
 SHEET 5 OF 5